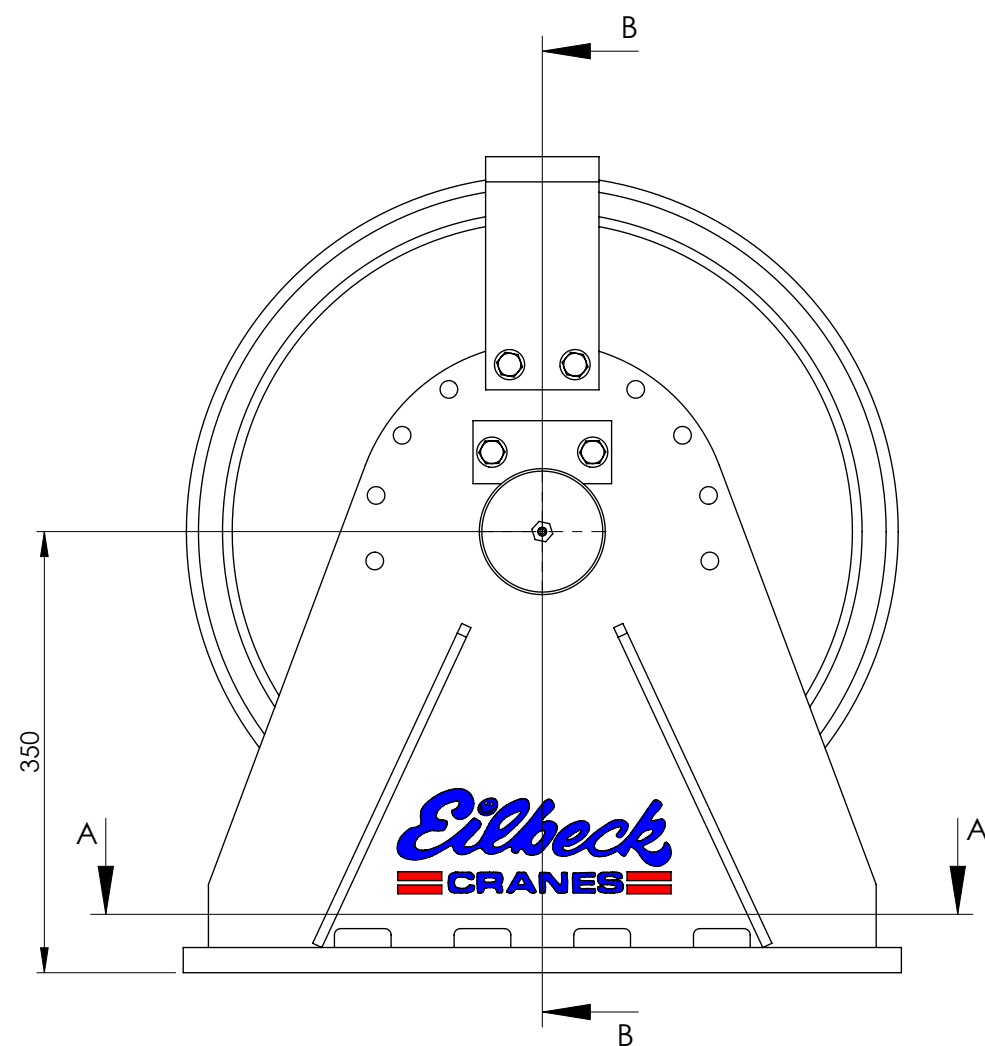
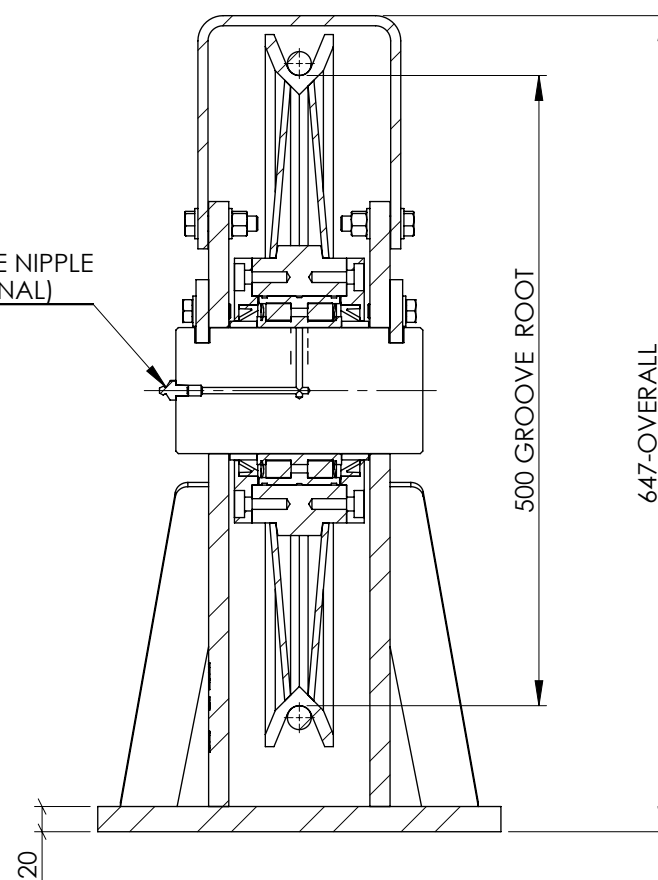


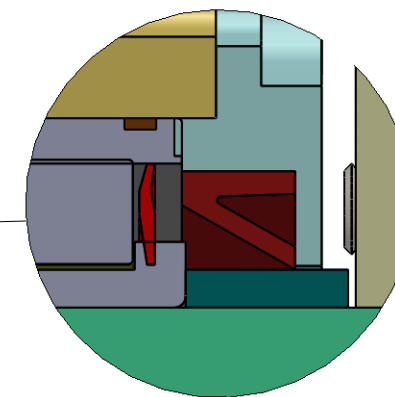
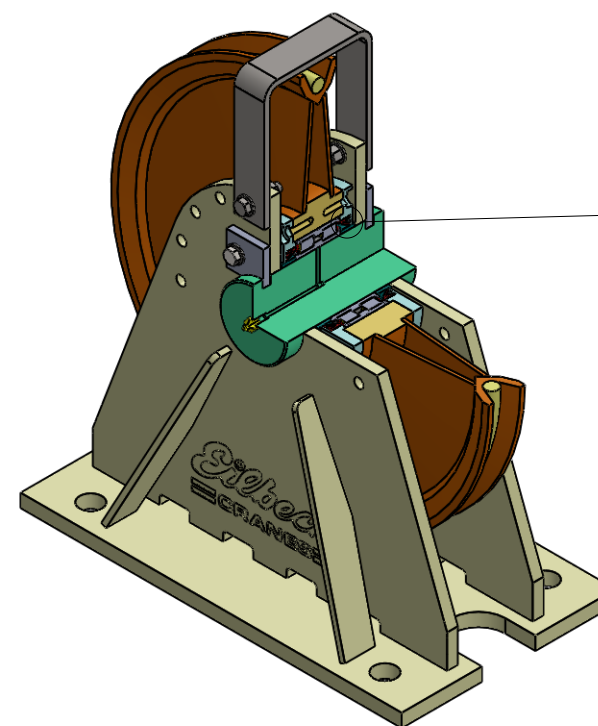
SECTION A-A



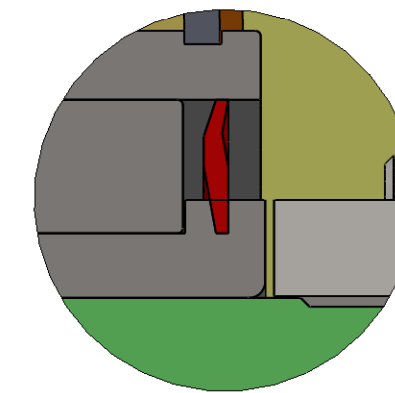
GREASE NIPPLE
(OPTIONAL)



SECTION B-B



SHEAVE EQUIPED WITH SEAL ARRANGEMENT TYPE A
WITH CYLINRICAL BEARING SEALED AND V-RING SEAL
FOR ADDITIONAL DIRT PROTECTION



SHEAVE EQUIPED WITH SEAL ARRANGEMENT TYPE B
WITH CYLINRICAL BEARING SEALED

ROPE DIA. [mm]	MAXIMUM MECHANISM CLASS	ROPE TENSION * [kN]
16	M8	26
18	M7	41
20	M7	51
22	M6	81
24	M5	115
26	M4	154
28	M4	182
30	M3	238
32	M2	286
36	M1	377

* ROPE TENSION IS BASED ON ROPE GRADE 1960 MPa
LOWER MECHANISM CLASS INCREASES ROPE TENSION.

TECHNICAL DATA:

- SHEAVE CONFORM TO AS 1418.1, FEM1.001 AND DIN 15020.
- MECHANISM CLASS RANGE FROM M1 TO M8.
- ROPE GUARD, ONE OFF IS SUPPLIED AS STANDARD.
- SHEAVE MOUNTING BOLT SHALL BE GRADE 8.8
- FRAME MOUNTING WITH BASE PLATE IN COMPRESSION IS CONSIDERED
- FOR OTHER MOUNTING, PLEASE CONSULT EILBECK CRANES WINCH DIVISION.
- SHEAVE DESIGNS ARE AVAILABLE FOR LARGER ROPE DIAMETER.
- SHEAVE PIN GREASE NIPPLE SUPPLIED AS OPTIONAL.
- SURFACE FINISH: PAINTED, COLOUR Y14 - SAFETY YELLOW.
- ROPE GROOVE - HARDNESS : 200 - 250 HB
- SHEAVE FRAME WELDING TO AS 1554.1.SP
- SHAFT MATERIAL - BRIGHT STEEL.

DESIGN REFERENCES			APPROVAL FOR CONSTRUCTION			CLIENT: EILBECK CRANES			DRAWING TITLE		
STRUCTURAL REF	---	---	CHECKED BY	BO	---	PROJECT: STANDARD COMPONENTS			WIRE ROPE SHEAVE ASSEMBLY		
STRUCTURAL BY	---	---	APPROVED	TLE	---	EQUIPMENT ID ---			SINGLE SHEAVE BLOCK 500 DIA		
REGO BODY	---	---	DATE	-	---	 			GENERAL ARRANGEMENT		
MECHANICAL	EC	---	SIGNED	---	---				SCALE		
ELECTRICAL	EC	---							1:8		
REV	DATE	REVISION DESCRIPTION	DRN	CHK	APP				SIZE	DWG NO	REV
A	21/08/13	ISSUED FOR INFORMATION	TK	BO	TLE	copyright by Eilbeck Cranes www.eilbeckcranes.com			A3	ECS-500A/28-A-F500	A