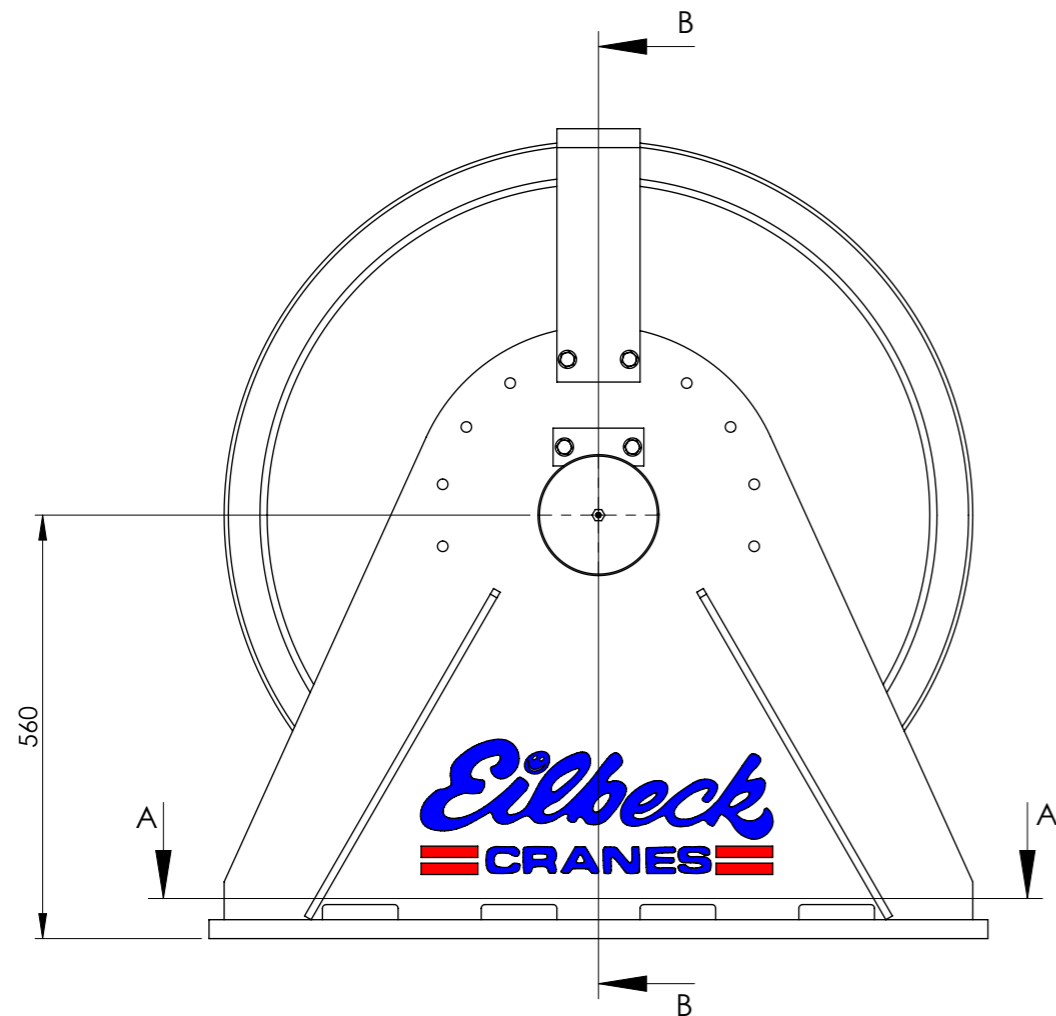
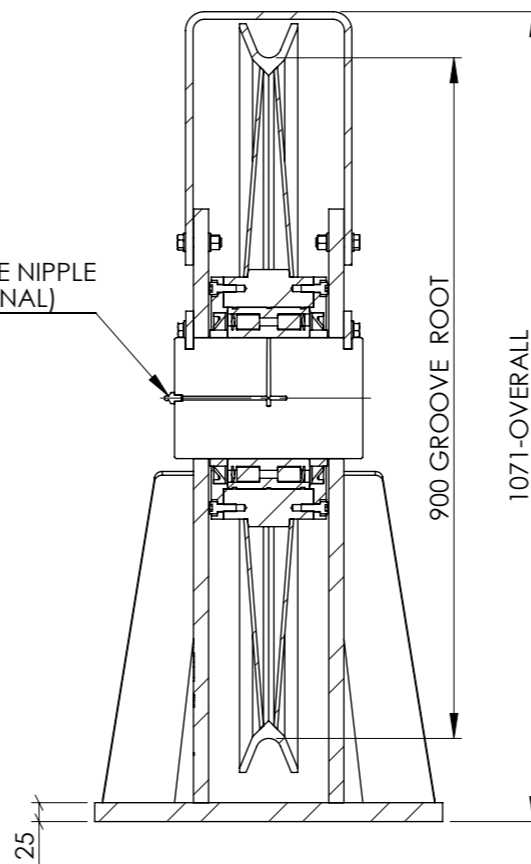


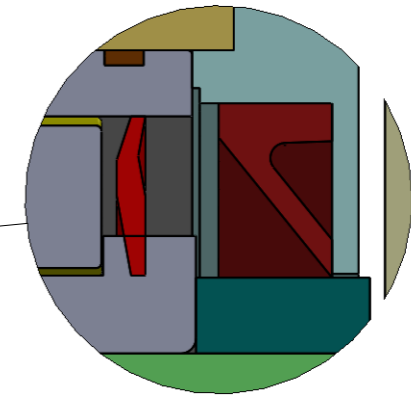
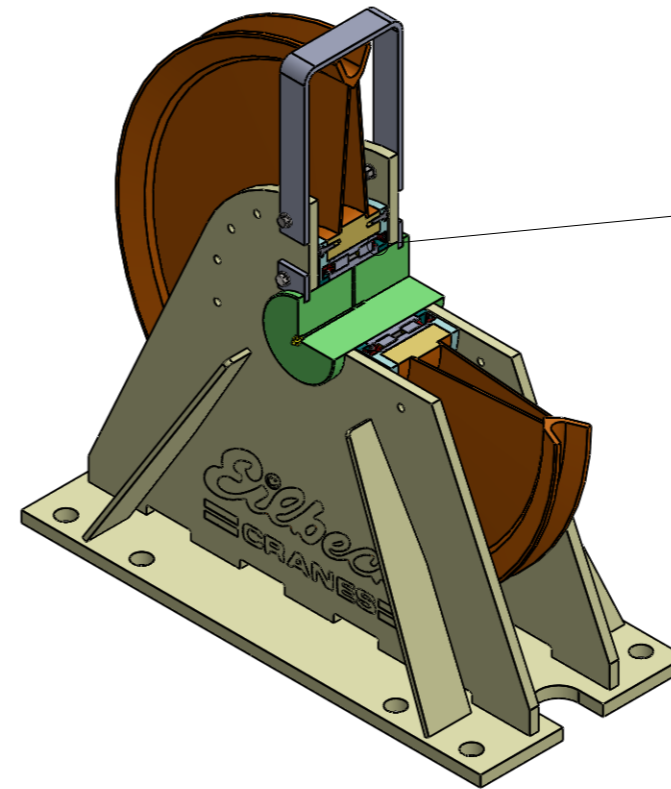
SECTION A-A



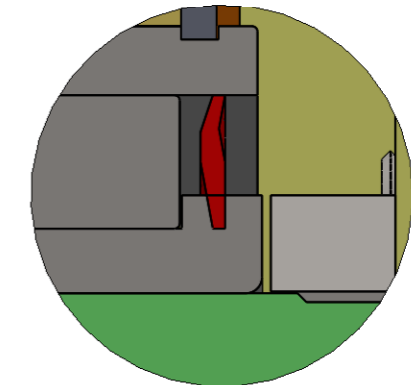
GREASE NIPPLE (OPTIONAL)



SECTION B-B



SHEAVE EQUIPED WITH SEAL ARRANGEMENT TYPE A WITH CYLINDRICAL BEARING SEALED AND V-RING SEAL FOR ADDITIONAL DIRT PROTECTION



SHEAVE EQUIPED WITH SEAL ARRANGEMENT TYPE B WITH CYLINDRICAL BEARING SEALED

ROPE DIA. [mm]	MAXIMUM MECHANISM CLASS	ROPE TENSION * [KN]
28	M8	81
30	M8	94
32	M8	106
36	M7	167
38	M6	242
40	M6	265
42	M5	365

* ROPE TENSION IS BASED ON ROPE GRADE 1960 MPa LOWER MECHANISM CLASS INCREASES ROPE TENSION.

TECHNICAL DATA:

- SHEAVE CONFORM TO AS 1418.1, FEM1.001 AND DIN 15020. MECHANISM CLASS RANGE FROM M1 TO M8.
- ROPE GUARD, ONE OFF IS SUPPLIED AS STANDARD.
- SHEAVE MOUNTING BOLT SHALL BE GRADE 8.8
- FRAME MOUNTING WITH BASE PLATE IN COMPRESSION IS CONSIDERED FOR OTHER MOUNTING, PLEASE CONSULT EILBECK CRANES WINCH DIVISION.
- SHEAVE DESIGNS ARE AVAILABLE FOR LARGER ROPE DIAMETER.
- SHEAVE PIN GREASE NIPPLE SUPPLIED AS OPTIONAL.
- SURFACE FINISH: PAINTED, COLOUR Y14 - SAFETY YELLOW.
- ROPE GROOVE - HARDNESS : 200 - 250 HB
- SHEAVE FRAME WELDING TO AS 1554.1.SP
- SHAFT MATERIAL - BRIGHT STEEL.

FILE LOCATION: N:\Crad\6.SolidaWorks\Sheaves-Standard Sizes\3HEAVE GA.1900.EC.900A-28-A-F900.sldt.dwg

DESIGN REFERENCES		APPROVAL FOR CONSTRUCTION	
STRUCTURAL REF	----	CHECKED BY	BO
STRUCTURAL BY	----	APPROVED	TLE
REGO BODY	----	DATE	---
MECHANICAL	EC	SIGNED	-----
ELECTRICAL	EC		

THIS DRAWING IS CONFIDENTIAL AND IS THE PROPERTY OF EILBECK CRANES PTY LTD. AND MUST NOT BE COPIED, LENT OR DISCLOSED TO A THIRD PARTY WITHOUT THEIR WRITTEN CONSENT.

CLIENT: EILBECK CRANES
PROJECT: STANDARD COMPONENTS
EQUIPMENT ID: ---

Eilbeck CRANES 100 Years Australian
© copyright by Eilbeck Cranes www.eilbeckcranes.com

DRAWING TITLE			SCALE	SIZE	DWG NO	REV
WIRE ROPE SHEAVE ASSEMBLY SINGLE SHEAVE BLOCK 900 DIA GENERAL ARRANGEMENT			1:8	A3	ECS-900A/28-A-F900	A

REV	DATE	REVISION DESCRIPTION	DRN	CHK	APP
A	21/08/13	ISSUED FOR INFORMATION	TK	BO	TLE