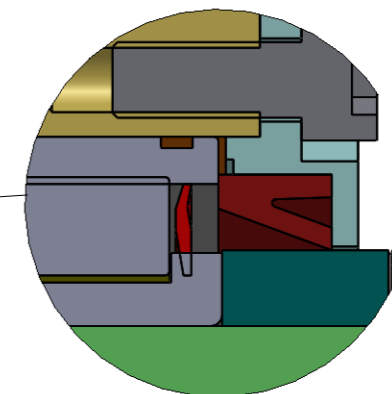
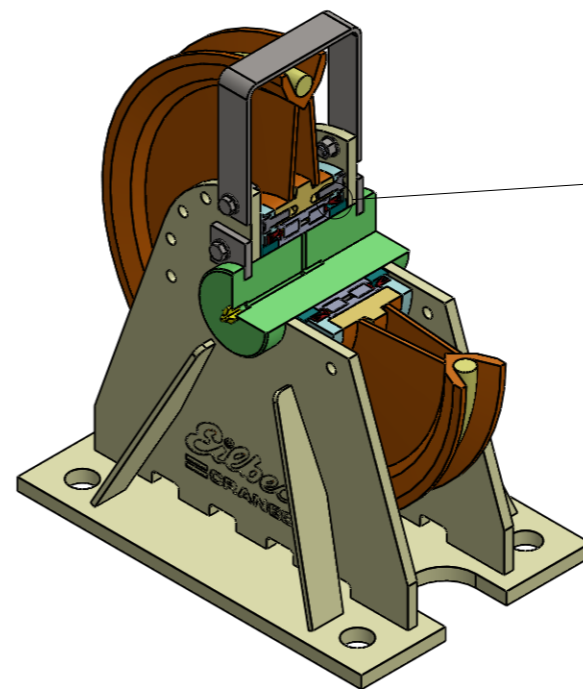
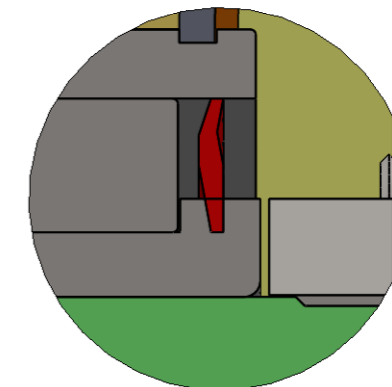


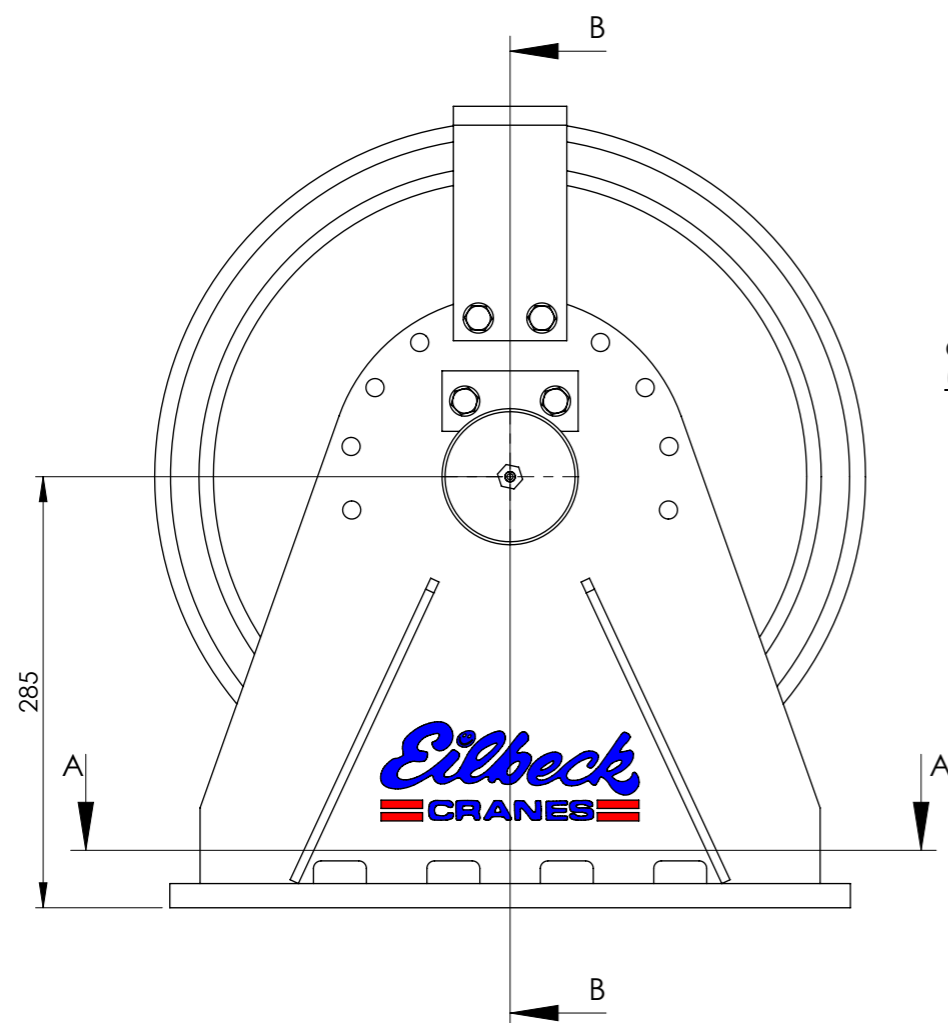
SECTION A-A



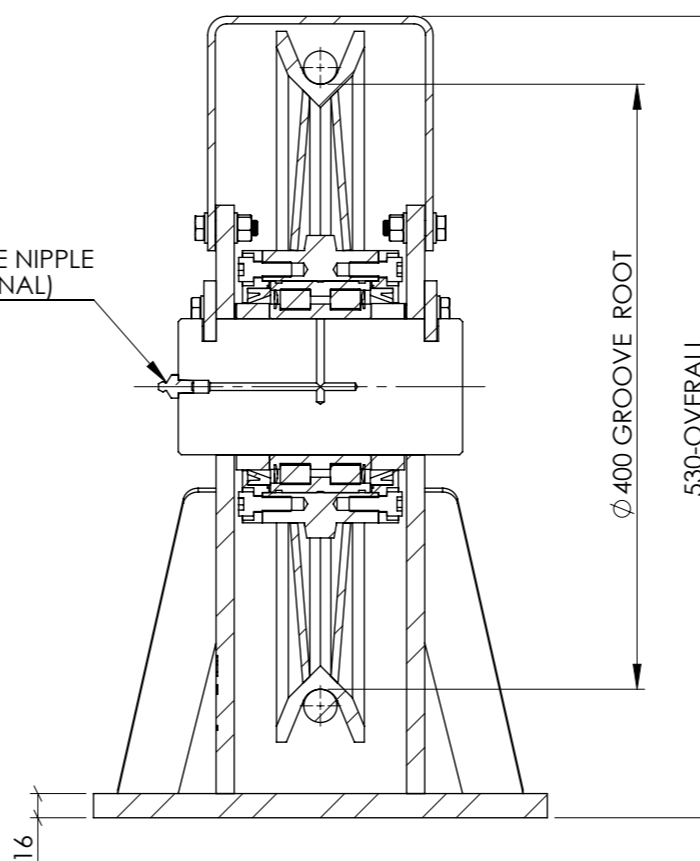
SHEAVE EQUIPED WITH SEAL ARRANGEMENT TYPE A WITH CYLINDRICAL BEARING SEALED AND V-RING SEAL FOR ADDITIONAL DIRT PROTECTION



SHEAVE EQUIPED WITH SEAL ARRANGEMENT TYPE B WITH CYLINDRICAL BEARING SEALED



GREASE NIPPLE (OPTIONAL)



SECTION B-B

ROPE DIA. (mm)	MAXIMUM MECHANISM CLASS	ROPE TENSION * [KN]
12	M8	14
14	M8	20
16	M7	33
18	M6	52
20	M5	81
22	M4	113
24	M3	146
26	M2	184
28	M2	217
30	M1	269

* ROPE TENSION IS BASED ON ROPE GRADE 1960 MPa LOWER MECHANISM CLASS INCREASES ROPE TENSION.

TECHNICAL DATA:

- SHEAVE CONFORM TO AS 1418.1, FEM1.001 AND DIN 15020. MECHANISM CLASS RANGE FROM M1 TO M8.
- ROPE GUARD, ONE OFF IS SUPPLIED AS STANDARD.
- SHEAVE MOUNTING BOLT SHALL BE GRADE 8.8
- FRAME MOUNTING WITH BASE PLATE IN COMPRESSION IS CONSIDERED FOR OTHER MOUNTING, PLEASE CONSULT EILBECK CRANES WINCH DIVISION.
- SHEAVE DESIGNS ARE AVAILABLE FOR LARGER ROPE DIAMETER.
- SHEAVE PIN GREASE NIPPLE SUPPLIED AS OPTIONAL.
- SURFACE FINISH: PAINTED, COLOUR Y14 - SAFETY YELLOW.
- ROPE GROOVE - HARDNESS : 200 - 250 HB
- SHEAVE FRAME WELDING TO AS 1554.1.SP
- SHAFT MATERIAL - BRIGHT STEEL.

FILE LOCATION: N:\Crad\6.SolidWorks\Sheaves\Standard Sizes\SHEAVE GA 400.ECS-400A-28-A-F400.sldwtw

DESIGN REFERENCES			APPROVAL FOR CONSTRUCTION		THIS DRAWING IS CONFIDENTIAL AND IS THE PROPERTY OF EILBECK CRANES PTY LTD. AND MUST NOT BE COPIED, LENT OR DISCLOSED TO A THIRD PARTY WITHOUT THEIR WRITTEN CONSENT.	CLIENT:	DRAWING TITLE		SCALE	SIZE	DWG NO	REV
STRUCTURAL REF	CHECKED BY	BO		EILBECK CRANES	WIRE ROPE SHEAVE ASSEMBLY					
STRUCTURAL BY	APPROVED	TLE	PROJECT:	SINGLE SHEAVE BLOCK 400 DIA						
REGO BODY	DATE	EQUIPMENT ID	GENERAL ARRANGEMENT						
MECHANICAL	EC	SIGNED			1:8	A3	ECS-400A/28-A-F400	A		
ELECTRICAL	EC										

REV	DATE	REVISION DESCRIPTION	DRN	CHK	APP
A	21/08/13	ISSUED FOR INFORMATION	TK	BO	TLE