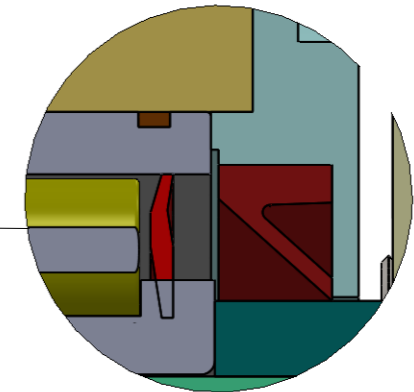
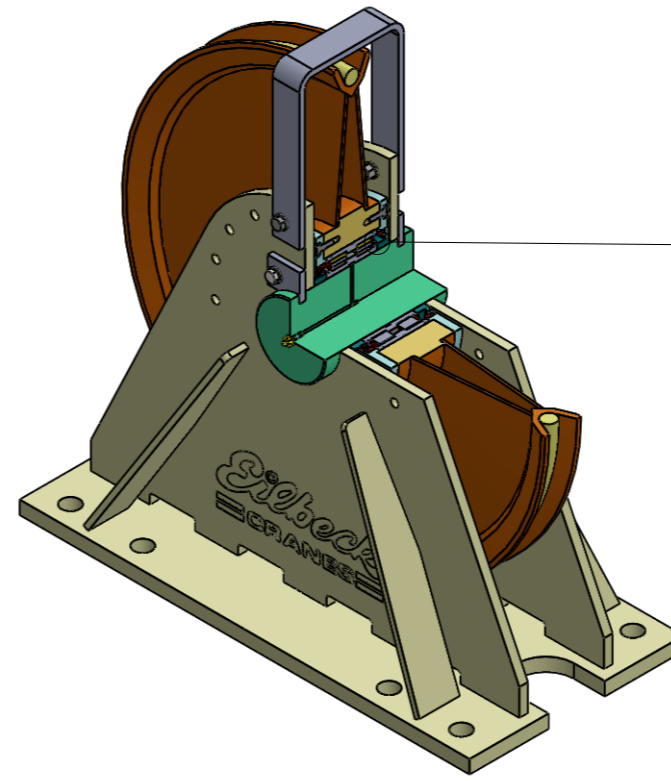
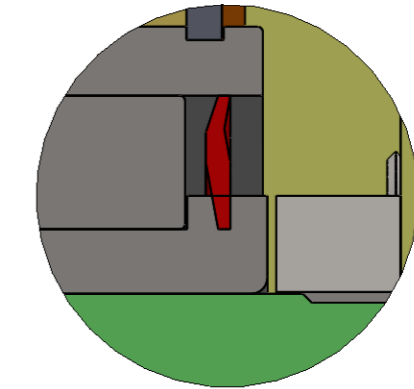


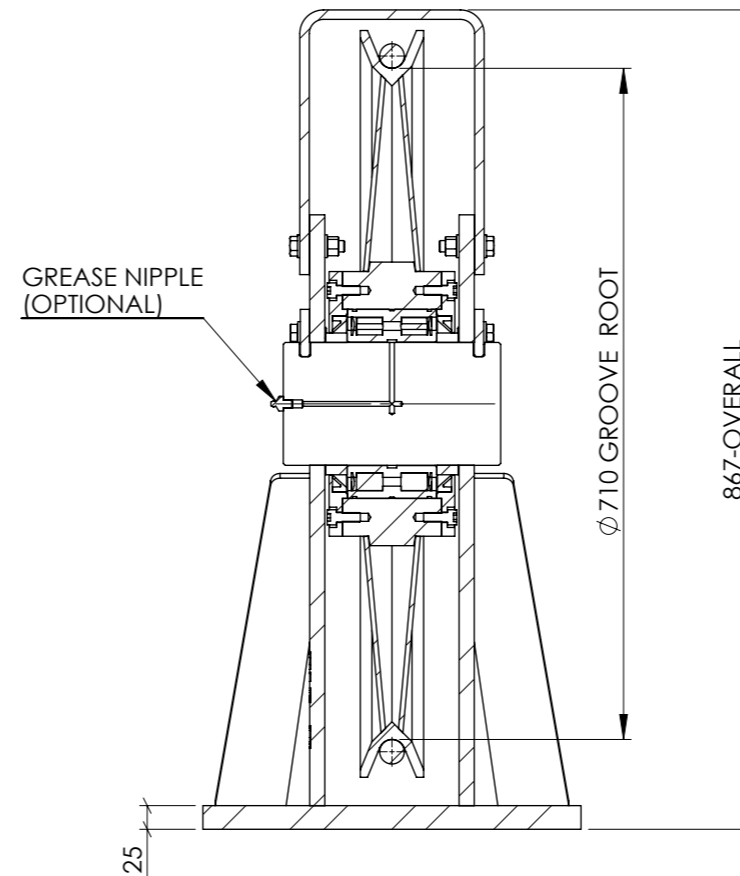
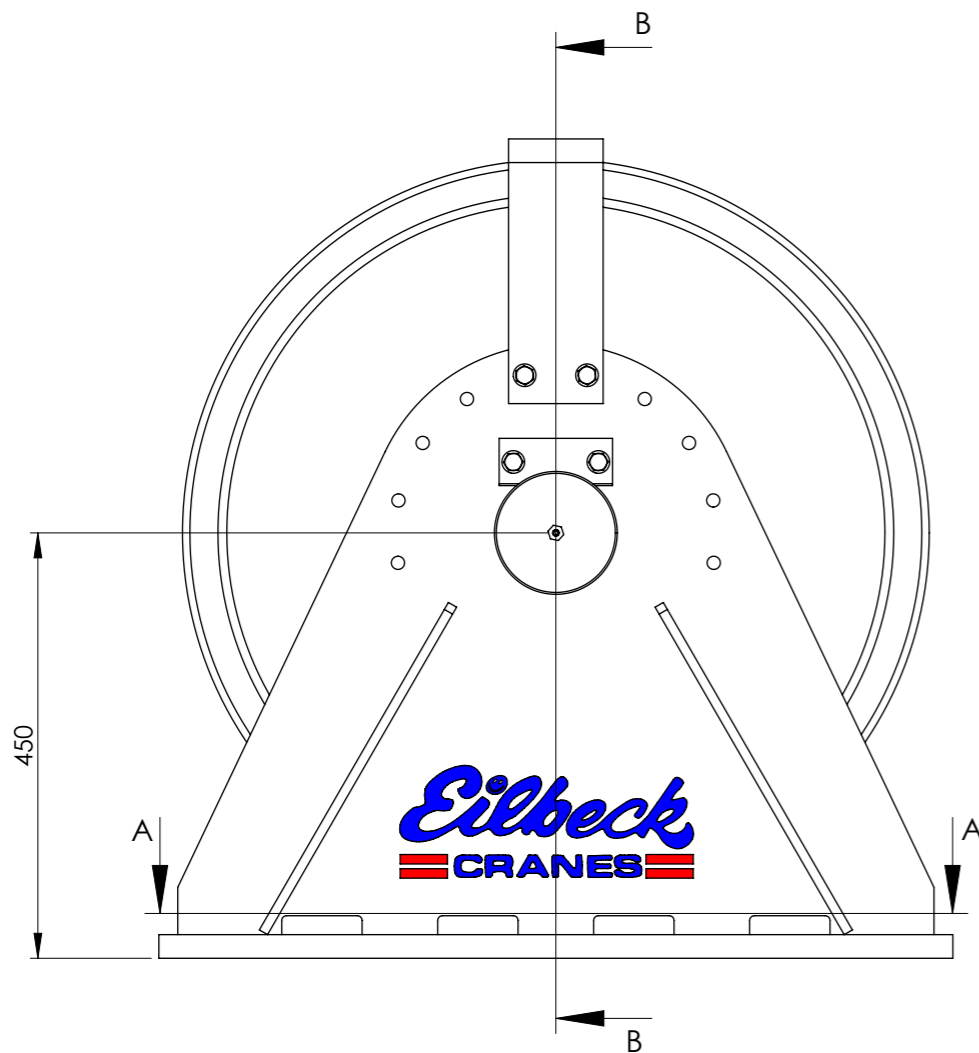
SECTION A-A



SHEAVE EQUIPED WITH SEAL ARRANGEMENT TYPE A WITH CYLINDRICAL BEARING SEALED AND V-RING SEAL FOR ADDITIONAL DIRT PROTECTION



SHEAVE EQUIPED WITH SEAL ARRANGEMENT TYPE B WITH CYLINDRICAL BEARING SEALED



SECTION B-B

ROPE DIA. [mm]	MAXIMUM MECHANISM CLASS	ROPE TENSION * [kN]
22	M8	50
24	M8	57
26	M7	87
28	M7	102
30	M6	151
32	M5	213
36	M4	297

* ROPE TENSION IS BASED ON ROPE GRADE 1960 MPa LOWER MECHANISM CLASS INCREASES ROPE TENSION.

TECHNICAL DATA:

- SHEAVE CONFORM TO AS 1418.1, FEM1.001 AND DIN 15020.
- MECHANISM CLASS RANGE FROM M1 TO M8.
- ROPE GUARD, ONE OFF IS SUPPLIED AS STANDARD.
- SHEAVE MOUNTING BOLT SHALL BE GRADE 8.8
- FRAME MOUNTING WITH BASE PLATE IN COMPRESSION IS CONSIDERED FOR OTHER MOUNTING, PLEASE CONSULT EILBECK CRANES WINCH DIVISION.
- SHEAVE DESIGNS ARE AVAILABLE FOR LARGER ROPE DIAMETER.
- SHEAVE PIN GREASE NIPPLE SUPPLIED AS OPTIONAL.
- SURFACE FINISH: PAINTED, COLOUR Y14 - SAFETY YELLOW.
- ROPE GROOVE - HARDNESS : 200 - 250 HB
- SHEAVE FRAME WELDING TO AS 1554.1.SP
- SHAFT MATERIAL - BRIGHT STEEL.

FILE LOCATION: N:\Crad\6.SolidaWorks\Sheaves-Standard Sizes\Sheave GA.710.EC.7.10A-28-A-F710.sldprt

DESIGN REFERENCES		APPROVAL FOR CONSTRUCTION	
STRUCTURAL REF	----	CHECKED BY	BO
STRUCTURAL BY	----	APPROVED	TLE
REGO BODY	----	DATE	-
MECHANICAL	EC	SIGNED	-----
ELECTRICAL	EC		

THIS DRAWING IS CONFIDENTIAL AND IS THE PROPERTY OF EILBECK CRANES PTY LTD. AND MUST NOT BE COPIED, LENT OR DISCLOSED TO A THIRD PARTY WITHOUT THEIR WRITTEN CONSENT.

CLIENT: EILBECK CRANES
 PROJECT: STANDARD COMPONENTS
 EQUIPMENT ID: ---

© copyright by Eilbeck Cranes www.eilbeckcranes.com

DRAWING TITLE			SCALE	SIZE	DWG NO	REV
WIRE ROPE SHEAVE ASSEMBLY SINGLE SHEAVE BLOCK 710 DIA GENERAL ARRANGEMENT			1:8	A3	ECS-710A/28-A-F710	A

REV	DATE	REVISION DESCRIPTION	DRN	CHK	APP
A	21/08/13	ISSUED FOR INFORMATION	TK	BO	TLE