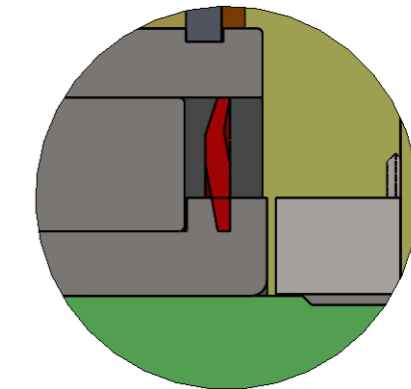
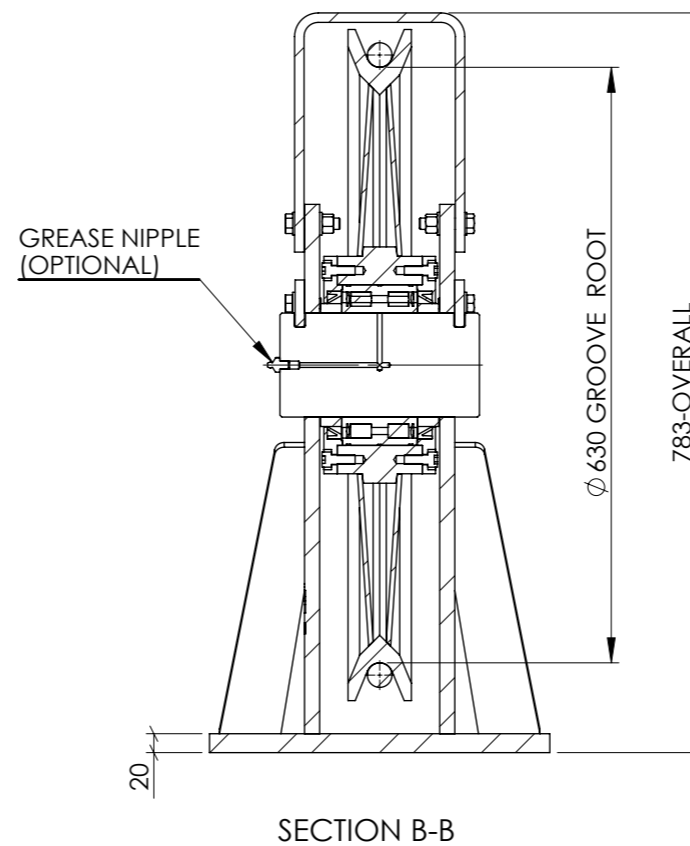
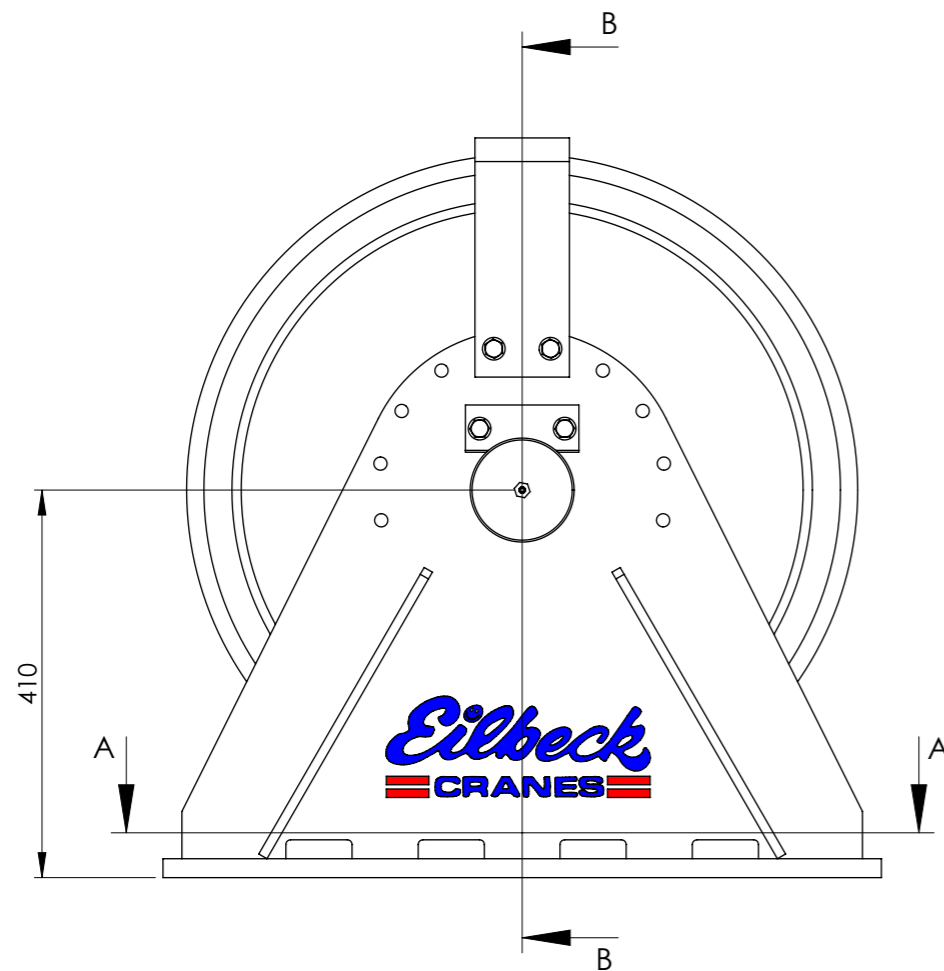


SHEAVE EQUIPED WITH SEAL ARRANGEMENT TYPE A WITH CYLINDRICAL BEARING SEALED AND V-RING SEAL FOR ADDITIONAL DIRT PROTECTION



SHEAVE EQUIPED WITH SEAL ARRANGEMENT TYPE B WITH CYLINDRICAL BEARING SEALED



ROPE DIA. [mm]	MAXIMUM MECHANISM CLASS	ROPE TENSION * [KN]
22	M8	50
24	M7	73
26	M6	110
28	M6	130
30	M5	188
32	M4	239
36	M3	334

* ROPE TENSION IS BASED ON ROPE GRADE 1960 MPa LOWER MECHANISM CLASS INCREASES ROPE TENSION.

TECHNICAL DATA:

- SHEAVE CONFORM TO AS 1418.1, FEM1.001 AND DIN 15020.
- MECHANISM CLASS RANGE FROM M1 TO M8.
- ROPE GUARD, ONE OFF IS SUPPLIED AS STANDARD.
- SHEAVE MOUNTING BOLT SHALL BE GRADE 8.8
- FRAME MOUNTING WITH BASE PLATE IN COMPRESSION IS CONSIDERED FOR OTHER MOUNTING, PLEASE CONSULT EILBECK CRANES WINCH DIVISION.
- SHEAVE DESIGNS ARE AVAILABLE FOR LARGER ROPE DIAMETER.
- SHEAVE PIN GREASE NIPPLE SUPPLIED AS OPTIONAL.
- SURFACE FINISH: PAINTED, COLOUR Y14 - SAFETY YELLOW.
- ROPE GROOVE - HARDNESS : 200 - 250 HB
- SHEAVE FRAME WELDING TO AS 1.554.1.SP
- SHAFT MATERIAL - BRIGHT STEEL.

DESIGN REFERENCES		APPROVAL FOR CONSTRUCTION	
STRUCTURAL REF	CHECKED BY	..BO
STRUCTURAL BY	APPROVED	..TLE
REGO BODY	DATE	..
MECHANICAL	..EC	SIGNED
ELECTRICAL	..EC		

THIS DRAWING IS CONFIDENTIAL AND IS THE PROPERTY OF EILBECK CRANES PTY LTD. AND MUST NOT BE COPIED, LENT OR DISCLOSED TO A THIRD PARTY WITHOUT THEIR WRITTEN CONSENT.

CLIENT: EILBECK CRANES
 PROJECT: STANDARD COMPONENTS
 EQUIPMENT ID: ---

© copyright by Eilbeck Cranes www.eilbeckcranes.com

DRAWING TITLE
**WIRE ROPE SHEAVE ASSEMBLY
 SINGLE SHEAVE BLOCK 630 DIA
 GENERAL ARRANGEMENT**

SCALE: 1:8
 SIZE: A3
 DWG NO: ECS-630A/28-A-F630
 REV: A

REV	DATE	REVISION DESCRIPTION	DRN	CHK	APP
A	21/08/13	ISSUED FOR INFORMATION	TK	BO	TLE