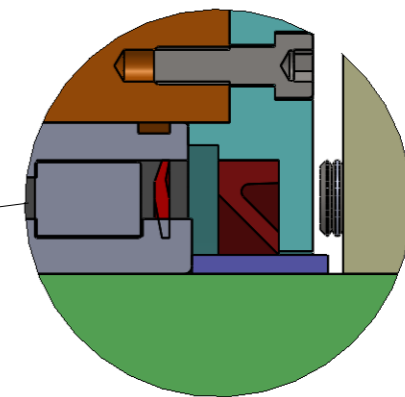
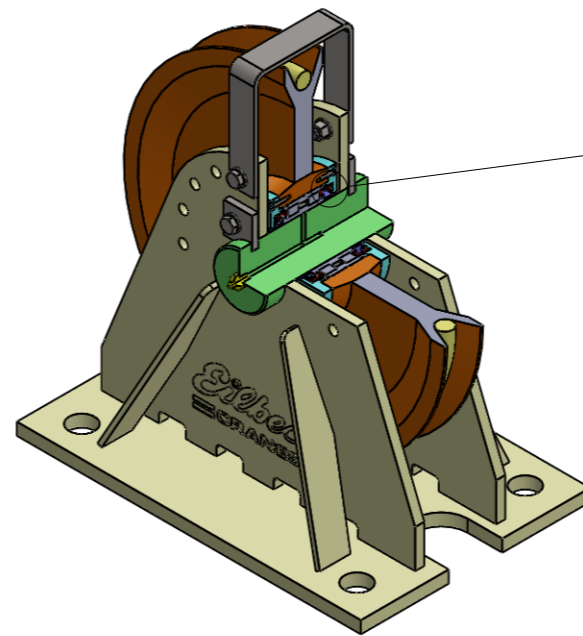
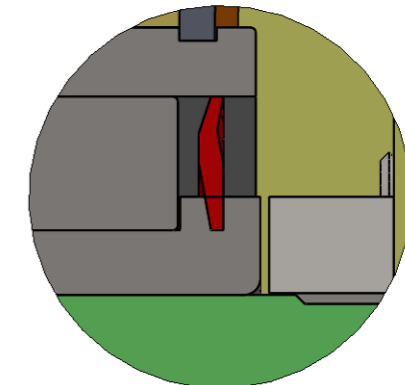


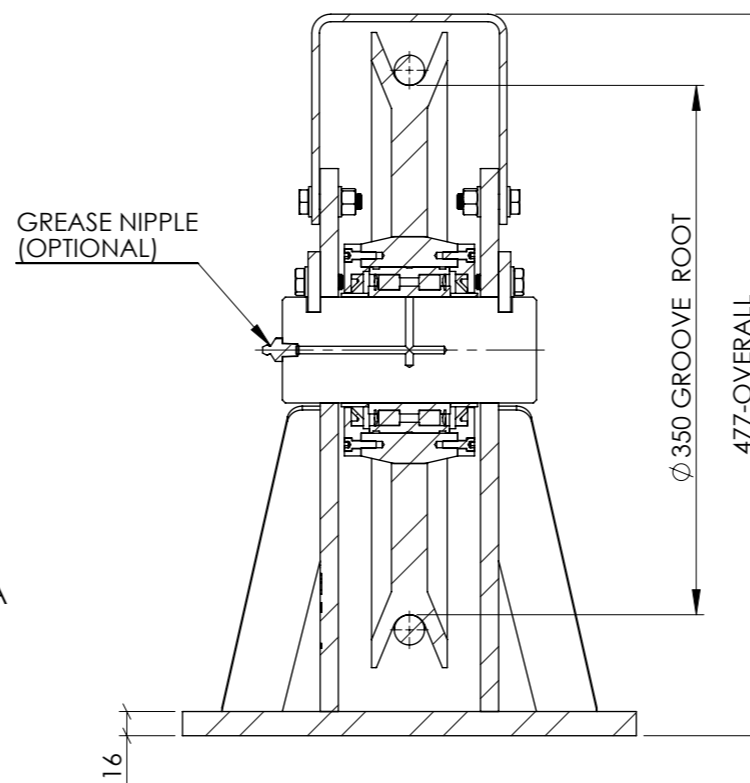
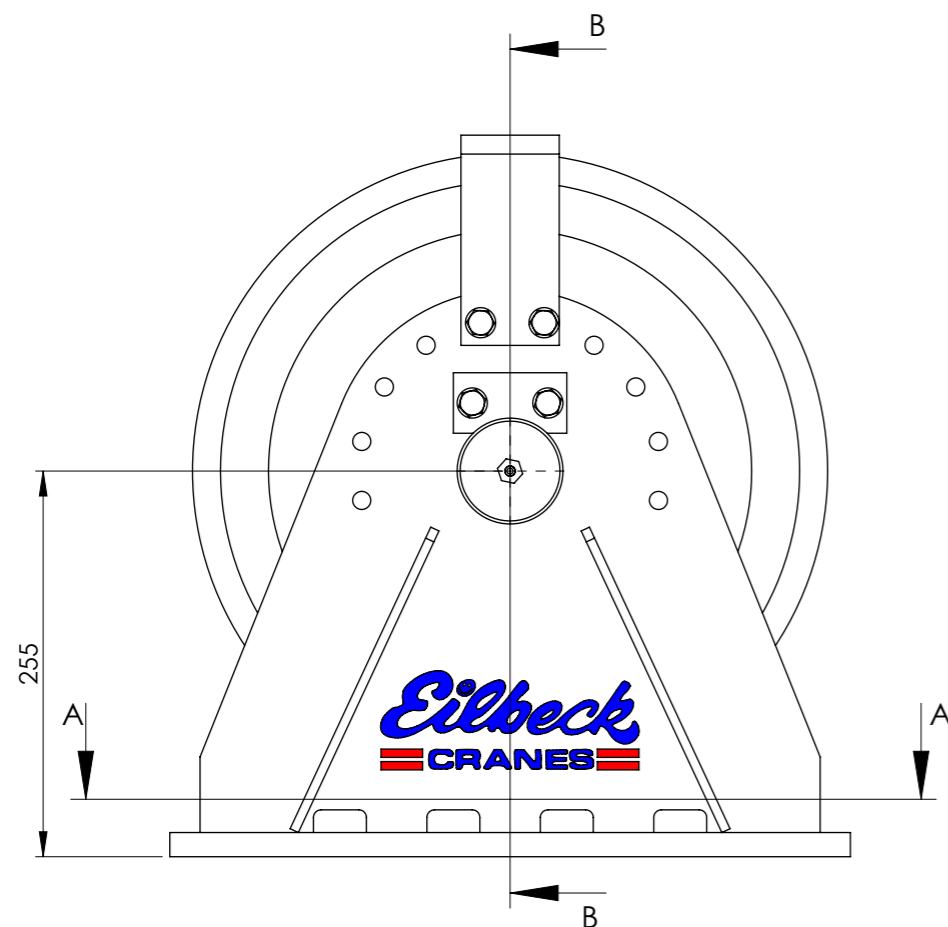
SECTION A-A



SHEAVE EQUIPED WITH SEAL ARRANGEMENT TYPE A WITH CYLINDRICAL BEARING SEALED AND V-RING SEAL FOR ADDITIONAL DIRT PROTECTION



SHEAVE EQUIPED WITH SEAL ARRANGEMENT TYPE B WITH CYLINDRICAL BEARING SEALED



SECTION B-B

ROPE DIA. [mm]	MAXIMUM MECHANISM CLASS	ROPE TENSION * [kN]
12	M8	14
14	M7	25
16	M5	52
18	M4	73
20	M3	103
22	M3	127
24	M2	154
26	M1	195
28	M1	230

* ROPE TENSION IS BASED ON ROPE GRADE 1960 MPa LOWER MECHANISM CLASS INCREASES ROPE TENSION.

TECHNICAL DATA:

- SHEAVE CONFORM TO AS 1418.1, FEM1.001 AND DIN 15020.
- MECHANISM CLASS RANGE FROM M1 TO M8.
- ROPE GUARD, ONE OFF IS SUPPLIED AS STANDARD.
- SHEAVE MOUNTING BOLT SHALL BE GRADE 8.8
- FRAME MOUNTING WITH BASE PLATE IN COMPRESSION IS CONSIDERED FOR OTHER MOUNTING, PLEASE CONSULT EILBECK CRANES WINCH DIVISION.
- SHEAVE DESIGNS ARE AVAILABLE FOR LARGER ROPE DIAMETER.
- SHEAVE PIN GREASE NIPPLE SUPPLIED AS OPTIONAL.
- SURFACE FINISH: PAINTED, COLOUR Y14 - SAFETY YELLOW.
- ROPE GROOVE - HARDNESS : 200 - 250 HB
- SHEAVE FRAME WELDING TO AS 1554.1.SP
- SHAFT MATERIAL - BRIGHT STEEL.

FILE LOCATION: N:\Crad\6.SolidaWorks\Sheaves\Standard Sizes\350A-28-A-F350.sldprt

DESIGN REFERENCES		APPROVAL FOR CONSTRUCTION	
STRUCTURAL REF	CHECKED BY	..BO.....
STRUCTURAL BY	APPROVED	..TLE.....
REGO BODY	DATE
MECHANICAL	..EC.....	SIGNED
ELECTRICAL	..EC.....		

THIS DRAWING IS CONFIDENTIAL AND IS THE PROPERTY OF EILBECK CRANES PTY LTD. AND MUST NOT BE COPIED, LENT OR DISCLOSED TO A THIRD PARTY WITHOUT THEIR WRITTEN CONSENT.

CLIENT: EILBECK CRANES
 PROJECT: STANDARD COMPONENTS
 EQUIPMENT ID: ---

© copyright by Eilbeck Cranes www.eilbeckcranes.com

DRAWING TITLE			SCALE	SIZE	DWG NO	REV
WIRE ROPE SHEAVE ASSEMBLY SINGLE SHEAVE BLOCK 350 DIA GENERAL ARRANGEMENT			1:8	A3	ECS-350A/28-A-F350	A

REV	DATE	REVISION DESCRIPTION	DRN	CHK	APP
A	21/08/13	ISSUED FOR INFORMATION	TK	BO	TLE