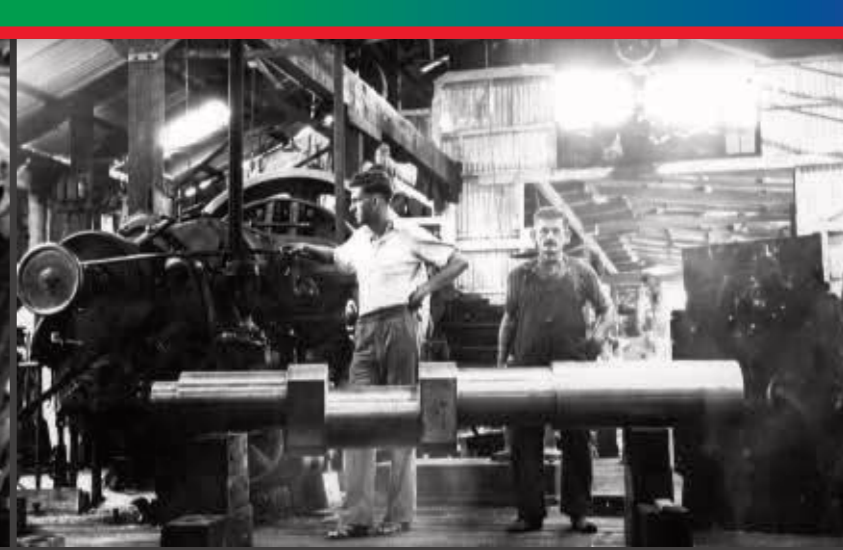
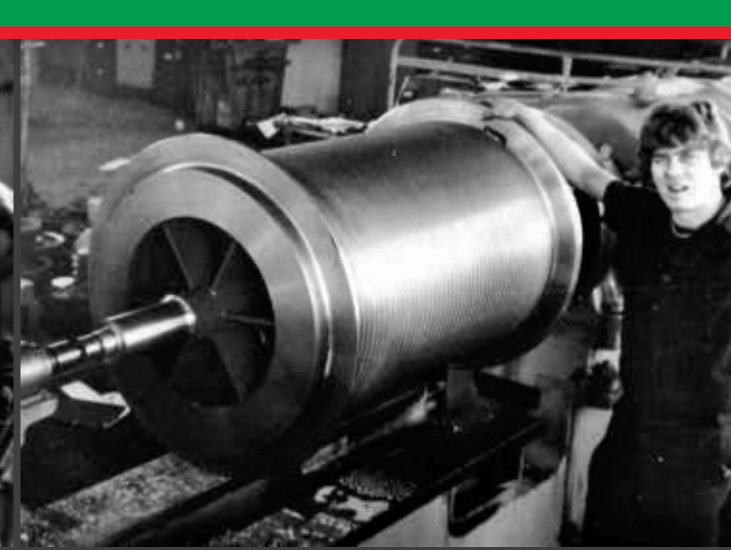
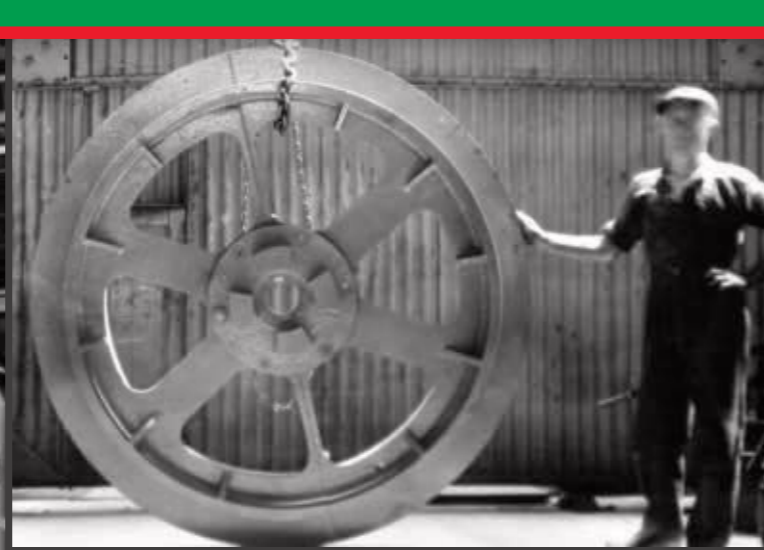




“One Company, Many Locations, Global Service”



**Winches & Sheaves**



## Eilbeck History

The Eilbeck family have engineering in their blood, going back four generations to the first Tom Eilbeck, who arrived in Western Australia in 1892 from Cumberland England. He was one of the first graduates of the University of Western Australia. In 1907 Tom Eilbeck went on to become the founder of T. Eilbeck and Son Limited, later becoming a distinguished businessman, not only recognised for his excellence in engineering but also for his political and business influence.

Today, current Managing Director of Eilbeck Cranes, Tom Eilbeck grandson of founder shares not only the same name but possesses an equal drive for engineering excellence and innovation. Traditional family values such as hard work and determination are not used as punch lines but rather have been foundation blocks in the history of this family's enterprise - Eilbeck Cranes. Today Eilbeck Cranes and Heavy Machining is proud to run seven manufacturing plants in Perth, Sydney, Melbourne, and Mackay, with many more service outlets spread throughout Australia.

Eilbeck Cranes has made its mark both nationally and internationally, as the only organisation to provide a serious challenge to the traditional European and Asian domination within the Crane Industry. Indeed, Eilbeck Cranes towers over the Australian market place with a winning share of the local market, and is proud to be recognised a serious contender on the international scale.

The Eilbeck Cranes story has all the ingredients to be regarded as Australia's greatest crane company; from its history, a devoted sales team, an innovative engineering team, a strong management team, and precision shop floor fabrication team, they all share the same core values.



# Rio Tinto Amrun Mine

## Dynamic Winches:

- Stacker feed conveyor dynamic take-up winch  
Class M5 140kN line pull
- Reclaim conveyor dynamic take-up winch  
Class M5 180kN line pull
- Ship-loader conveyor dynamic take-up winch  
Class M5 210kN line pull



## Eilbeck Winch Design, Manufacturing & Testing

Industrial and robust in both design and construction, Eilbeck Winches are the unit of choice in Australia's mining sites. We are famous for making the country's best cranes, so it's only natural that our winches are equally as reliable and durable with visibly superior quality and workmanship in every detail. Whether you need a winch to pull vertically,

horizontally, or through a series of pulleys, Eilbeck Winches, Sheaves and Capstans are the right choices for any mining application.

Our winches, capstans, and winching equipment are custom designed and manufactured to any specification required. Winches are manufactured with integrated manual and lockable

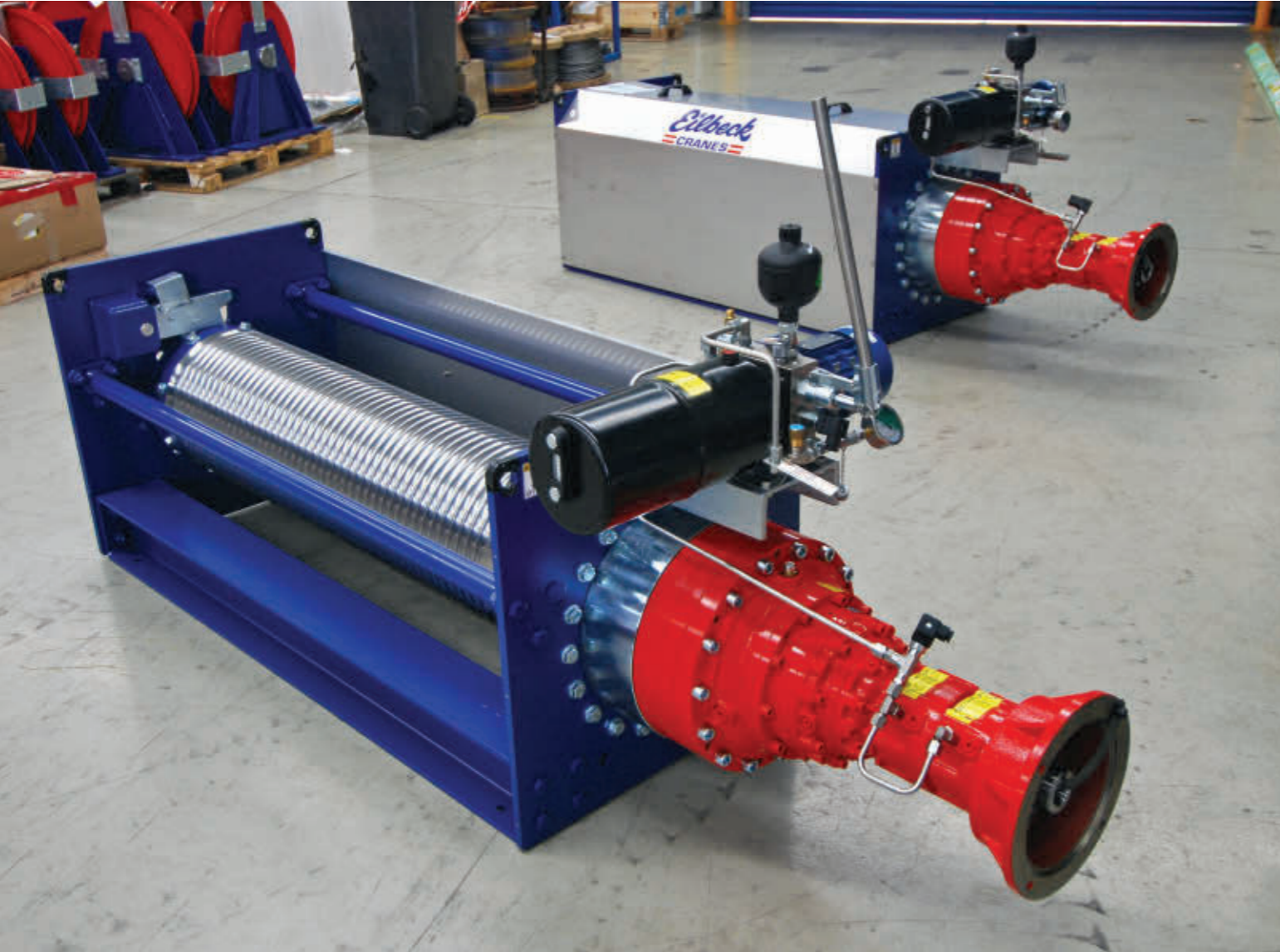
drum locking systems for secure and safe maintenance and inspection. Capstans are manufactured with specifically designed fail-safe hydraulic brake calipers, designed to operate when the drive motor has de-energised. All items are manufactured to stand the test of time – galvanised or painted to suit the harshest of environments.



## Copper Mine Panama

Complete design and supply of 19 winches for counterweights on various conveyor systems, to the maximum capacity of 33.16T line pull with 42mm rope along with 143 sheaves ranging from 250mm to 1050mm diameter.

The success and on-time delivery of this project lead to a further supply of conveyor take-up equipment into the South American Market.

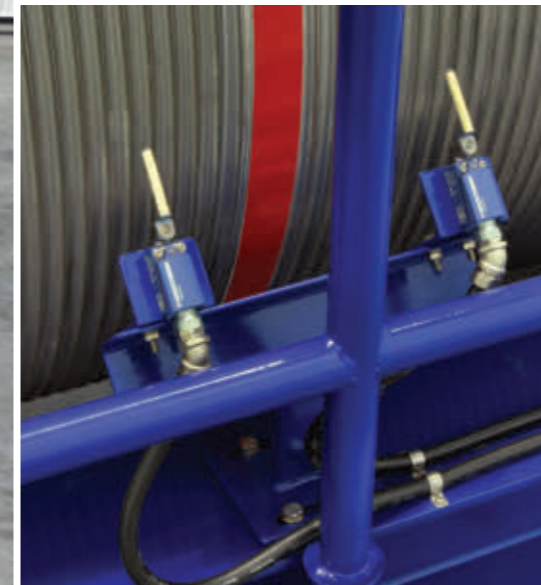
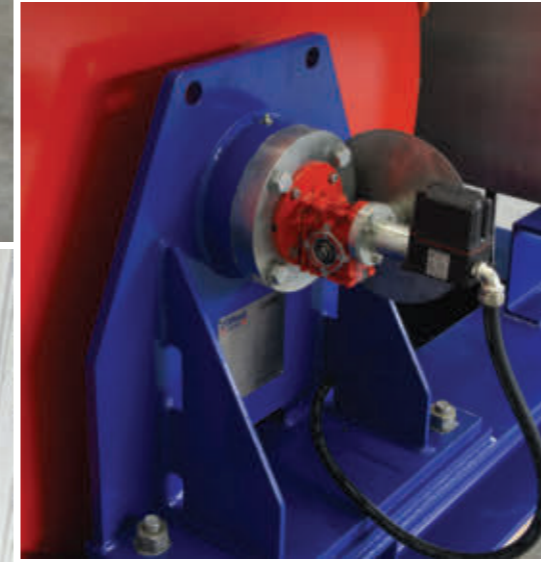


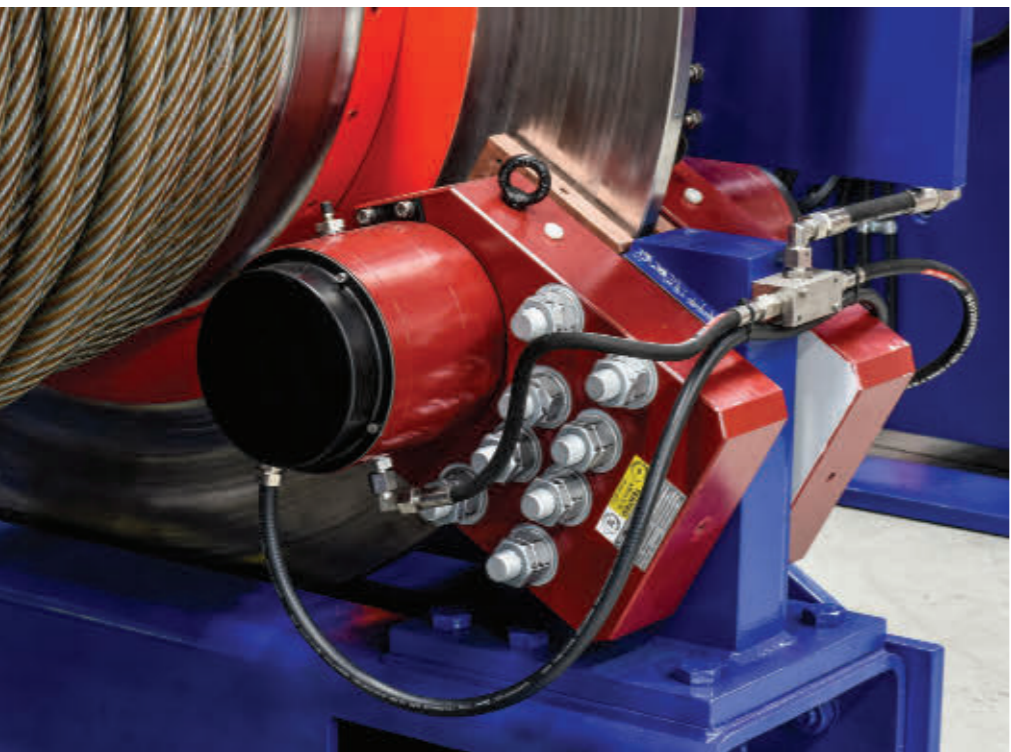


# Copper Mine Panama

Decant Tower Operating Gate Winch capacity 5.1T with top and bottom blocks giving an all up capacity of 30T.

- Features:
- Final rope travel limit switches
  - Rotary cam limit switches for upper and lower limits
  - High-speed thruster disc brakes
  - SS weather covers
  - Variable speed drive motor starter
  - Stainless steel panels
  - Mechanical gate height indicator





**SRG Civil  
Kangaroo Creek**

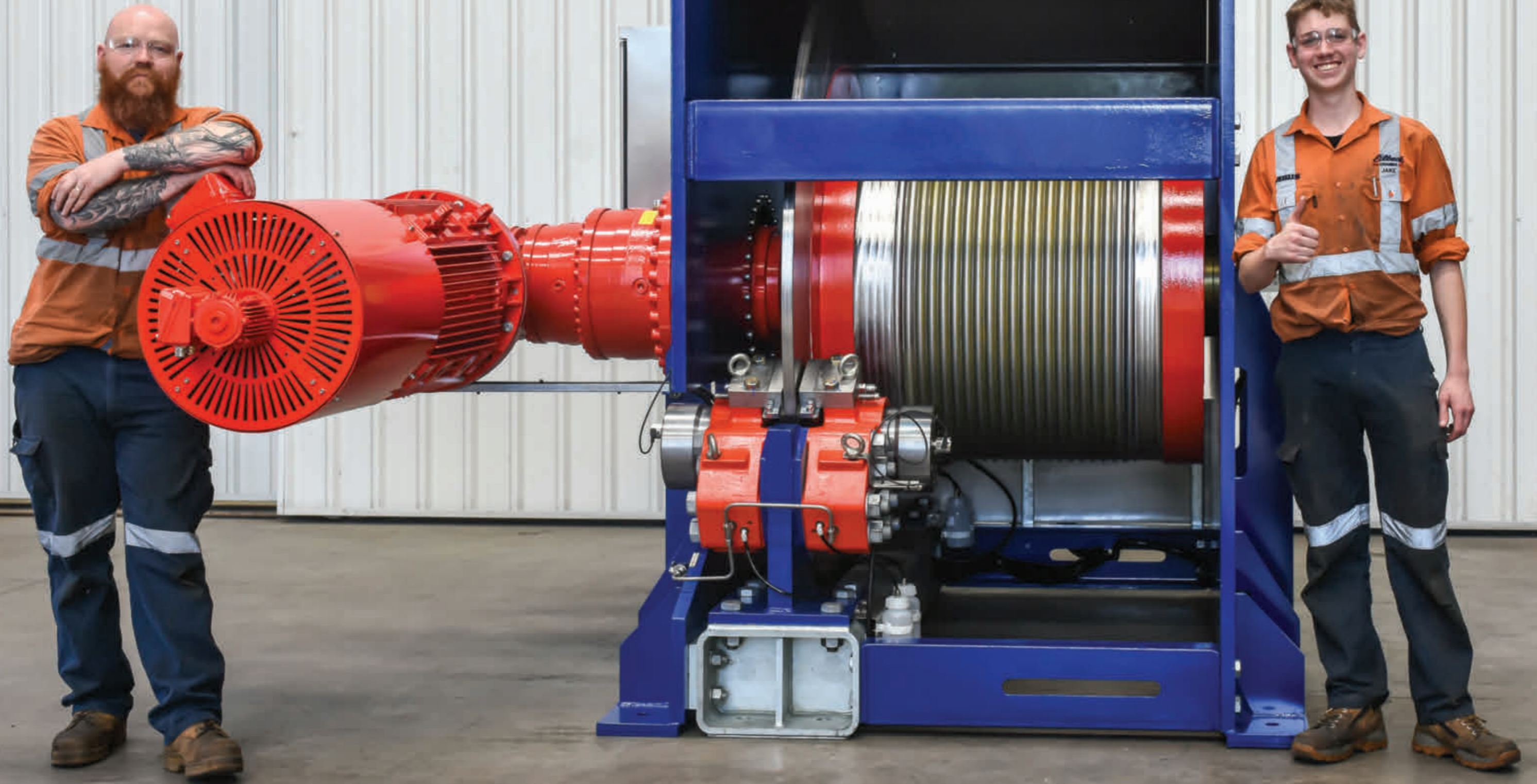
Special Slip Form 15T capacity man riding winches used to pull slip form and finishing platforms up Kangaroo Creek Dam Wall. Winches tested at 8.5T capacity for the full 60m travel and at 15T intermittently every 100-150mm.

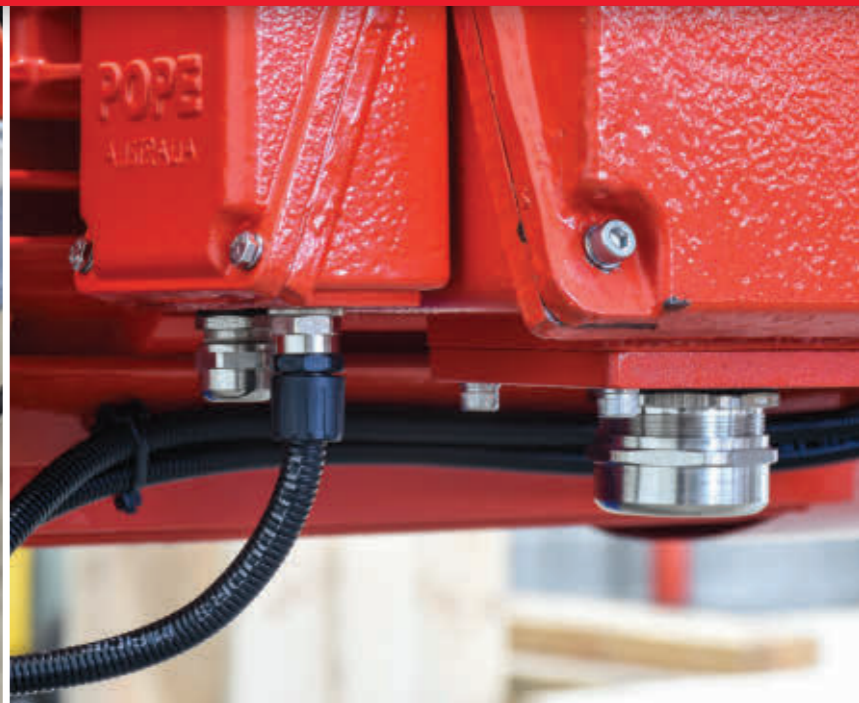
100% redundancy on mechanical items, brakes, and also electrical safety circuit to meet the requirement of AS1418 and AS3000.



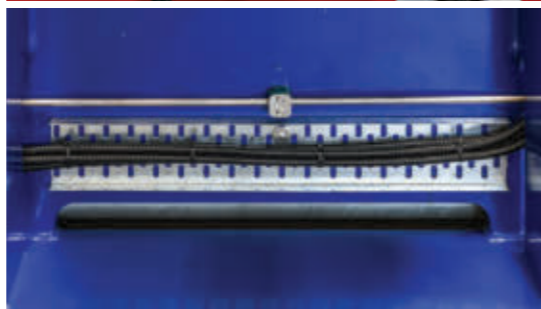
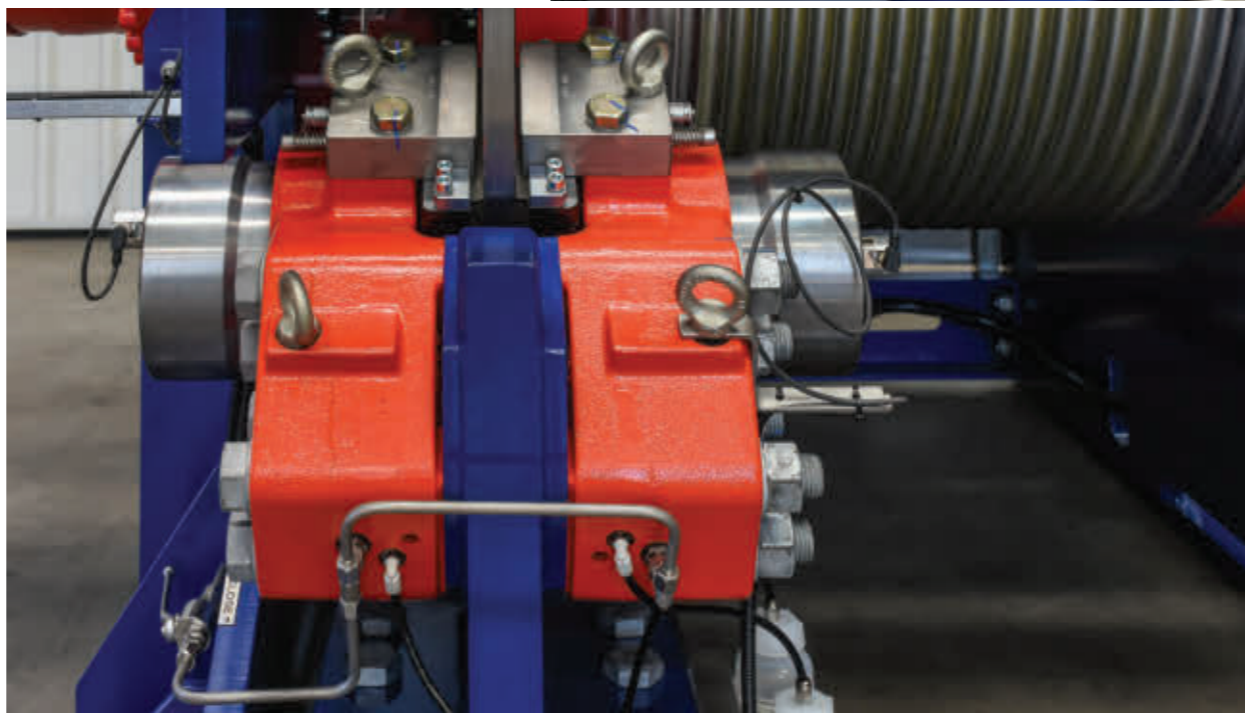
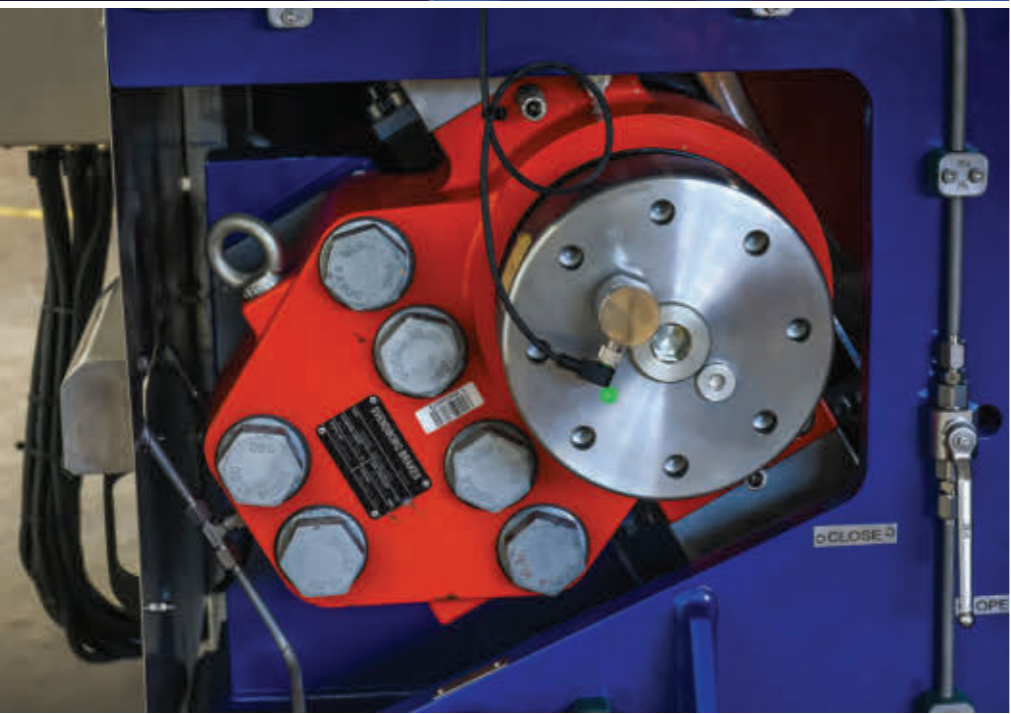
## Oz Minerals

Father and son team up to assemble this 15T active conveyor winch for Oz Minerals Carrapateena Underground Infrastructure Design Project





Oz Minerals

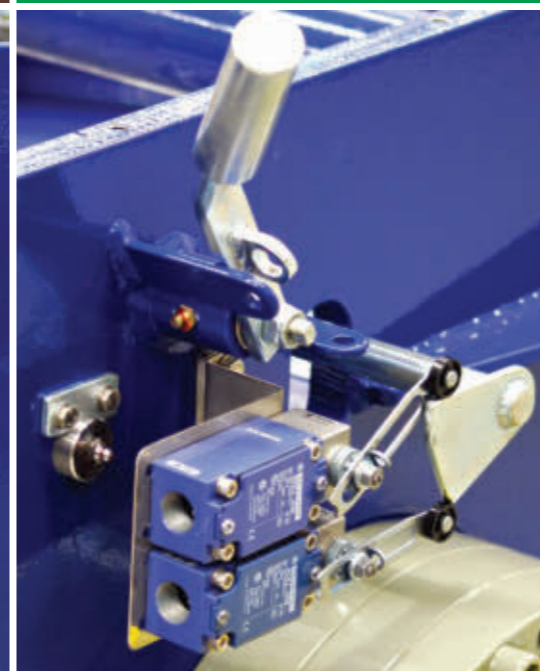


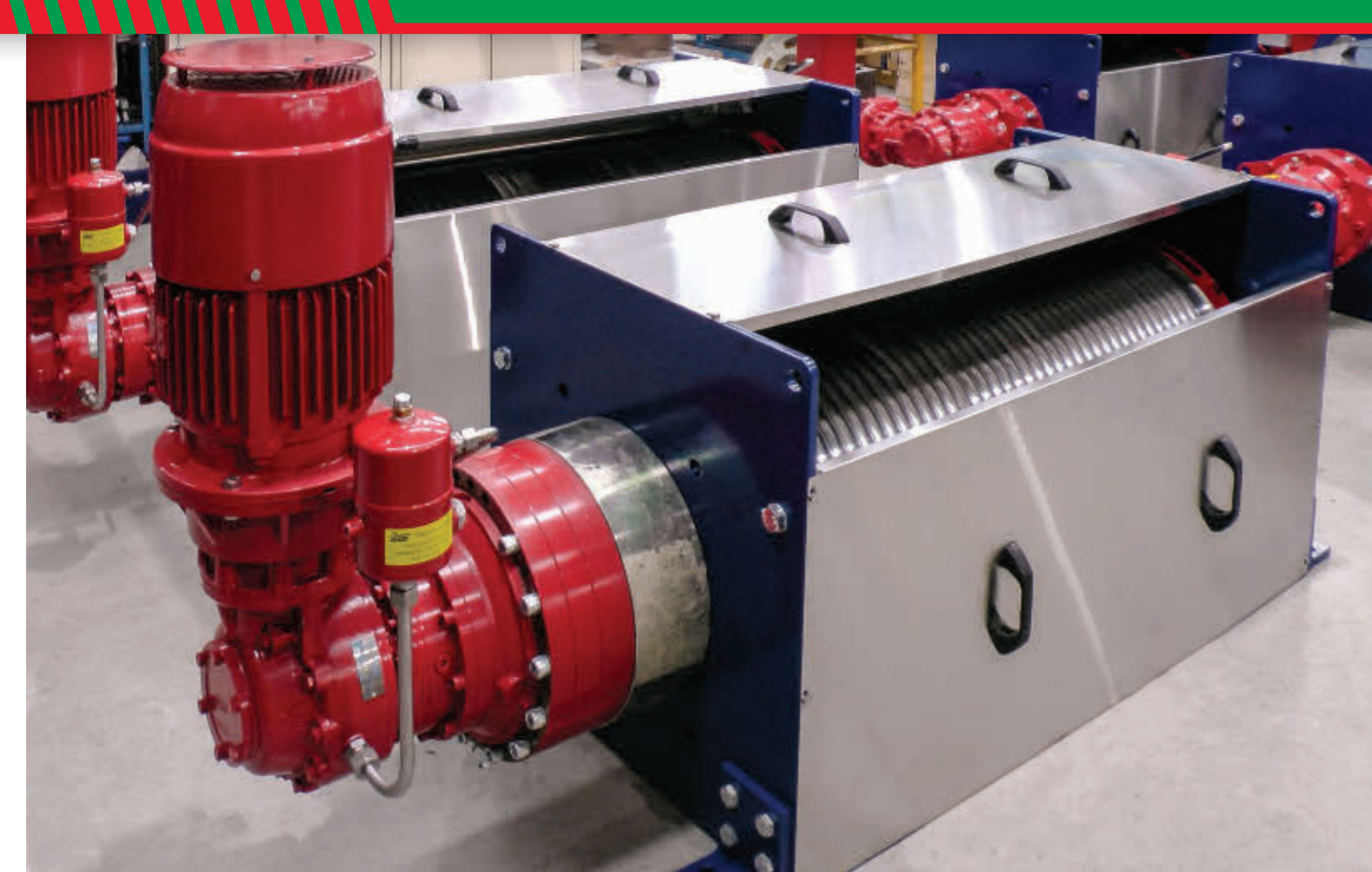




## Rio Tinto Silvergrass

Supply of one 12T counterweight winch along with one active modulating winch 37 tonne capacity for conveyor belt tensioning complete with electrics to integrate into clients' specs.

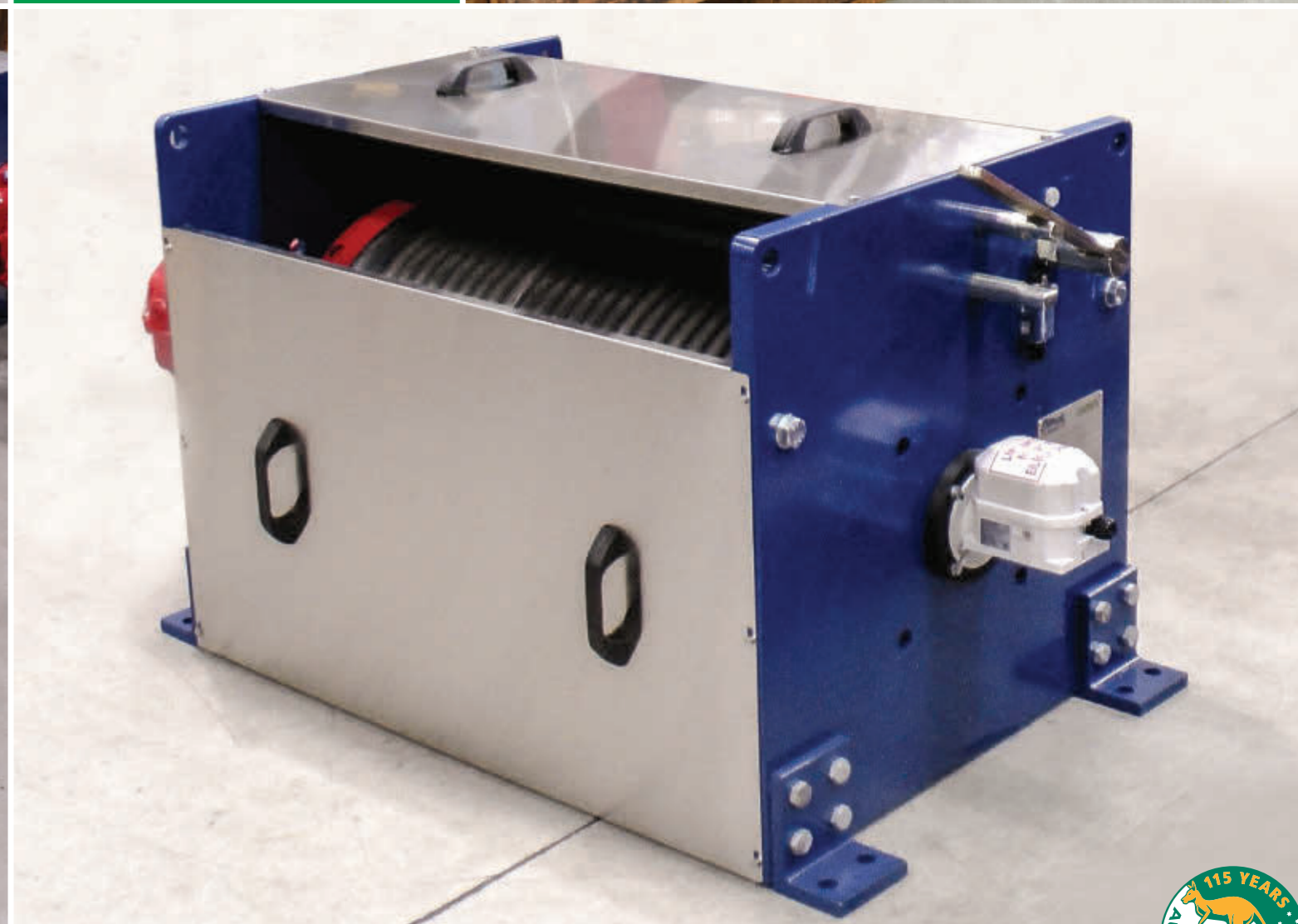


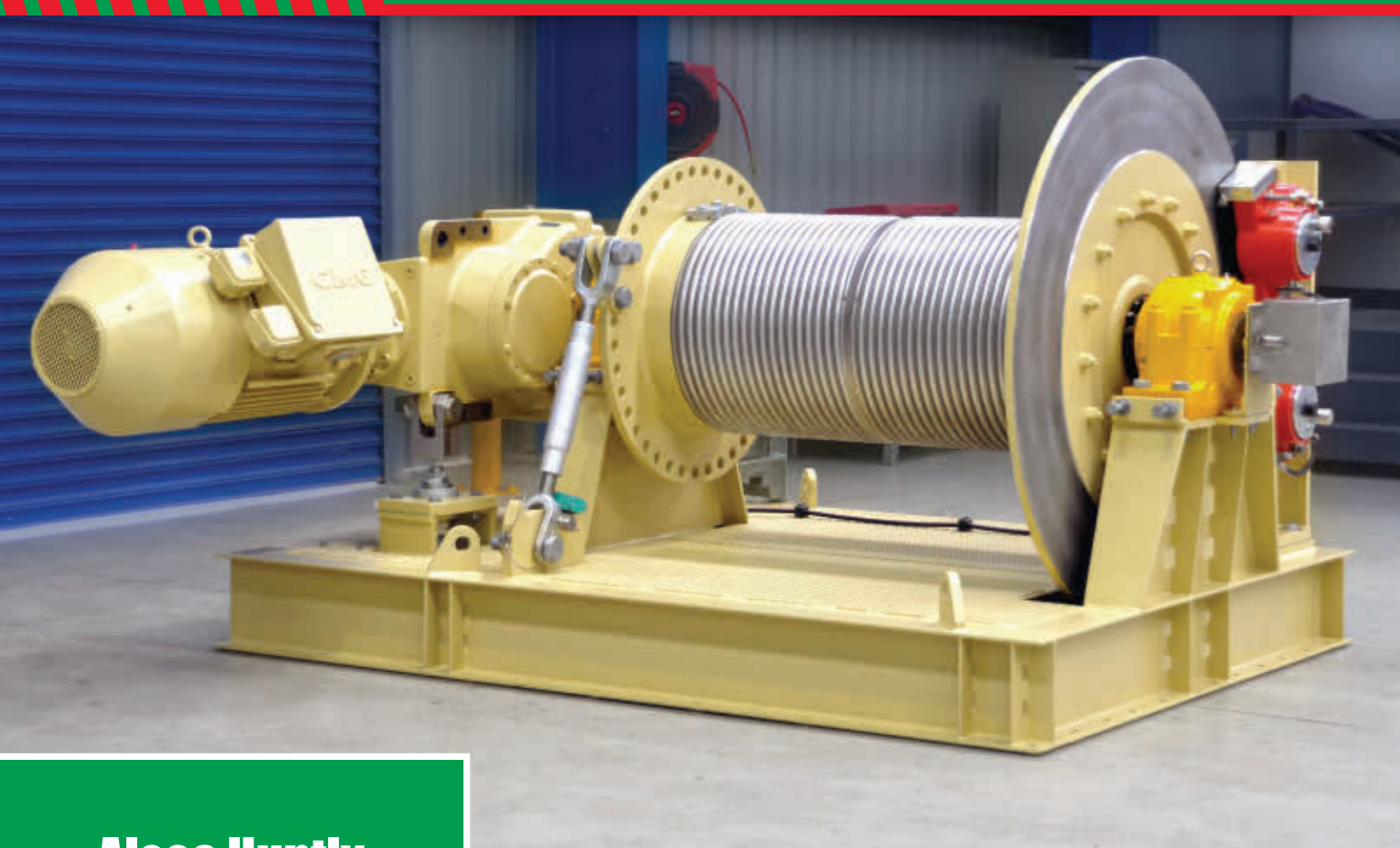


## OK Tedi Mining

Conveyor Take-up Winches package for the OK Tedi Crusher Replacement Project with supply of 5 counterweight winches along with 54 x 500mm sheaves:

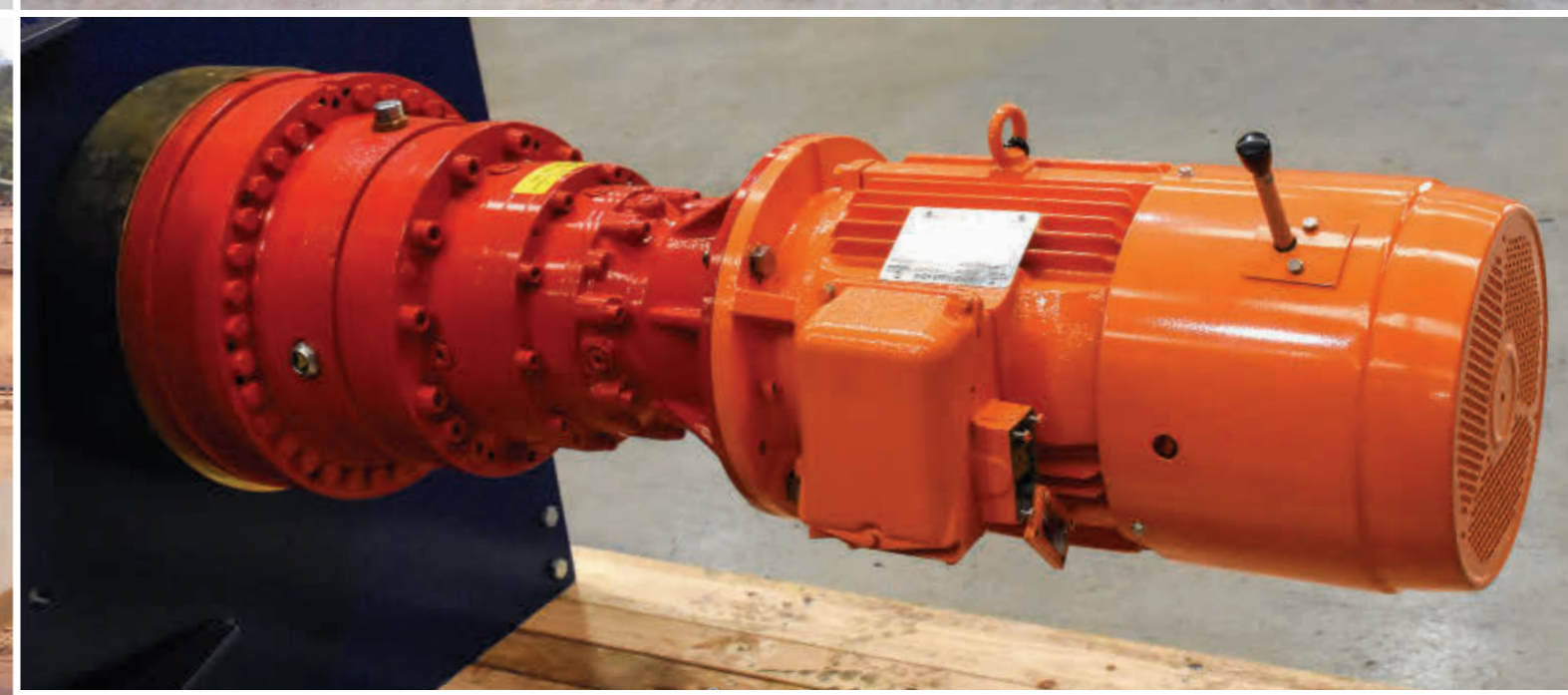
- Primary Discharge Conveyor Counterweight Winch
- Screening Plant Discharge Conveyor Counterweight Winch
- Stockpile Conveyor Counterweight Winch System
- Reclaim Discharge Conveyor Counterweight Winch
- Screening Plant Transfer Conveyor Counterweight Winch
- Ø500mm Sheave assemblies





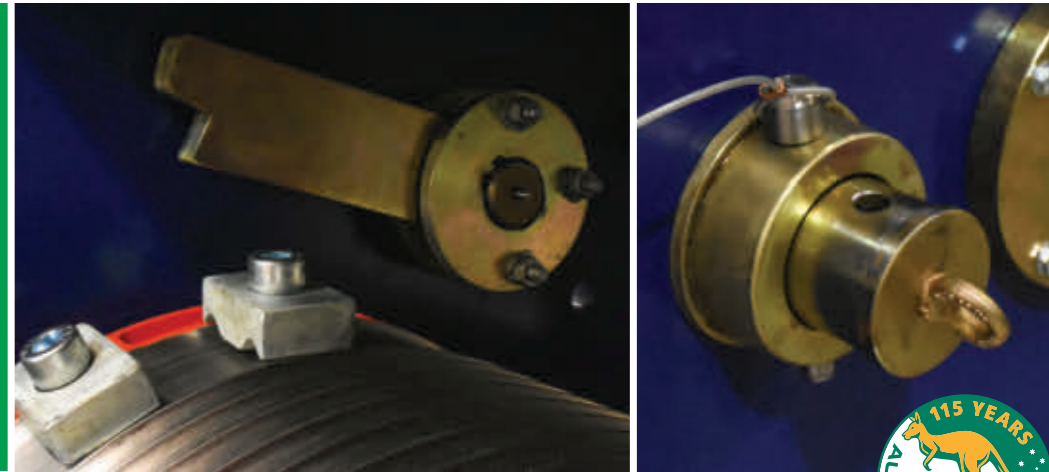
**Alcoa Huntly  
190 Stacker**

After the successful supply of a replacement winch for Boom Luffing Winch system in 2014 on the Huntly 190 Stacker, Alcoa engaged Eilbeck Winch Division to supply a second 115 kN line pull winch which is to replace the existing luffing winch system on the 290 Stacker, located at the Alcoa Pinjara Stacking Stockpiles.



**Rio Tinto  
Pilbara Iron**

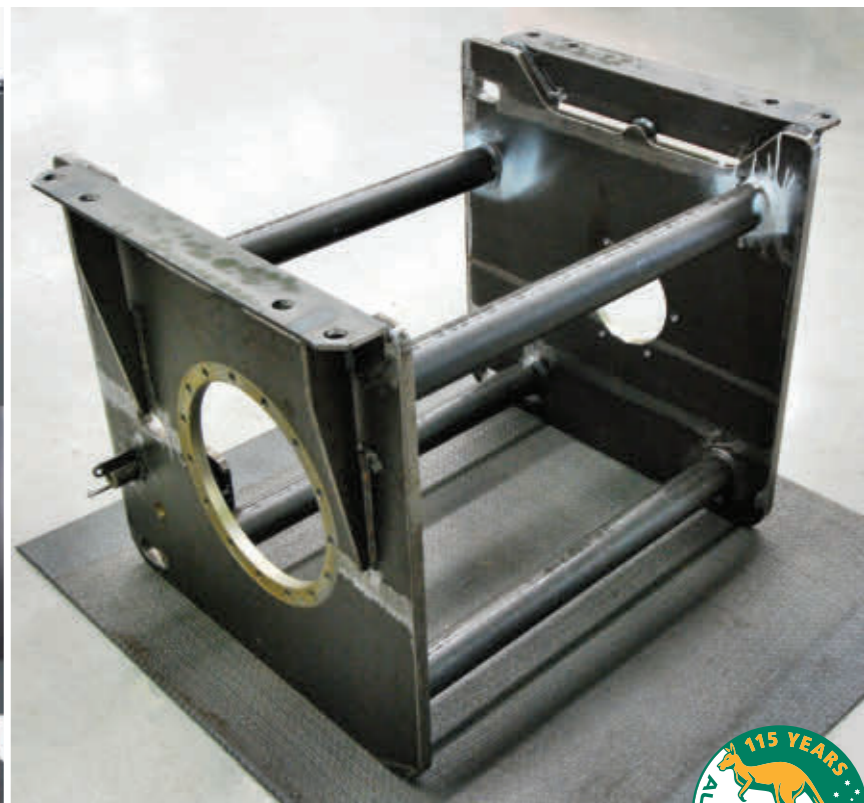
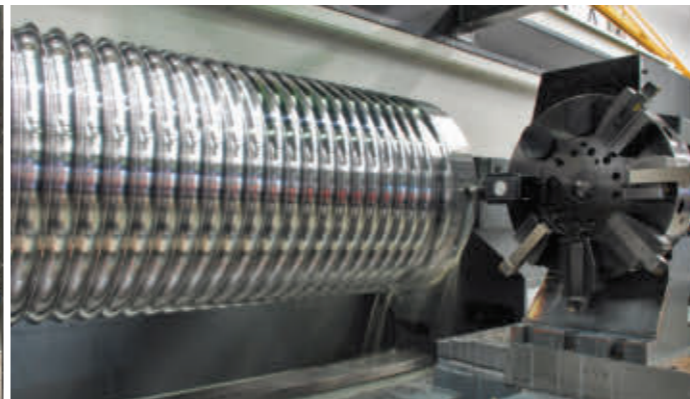
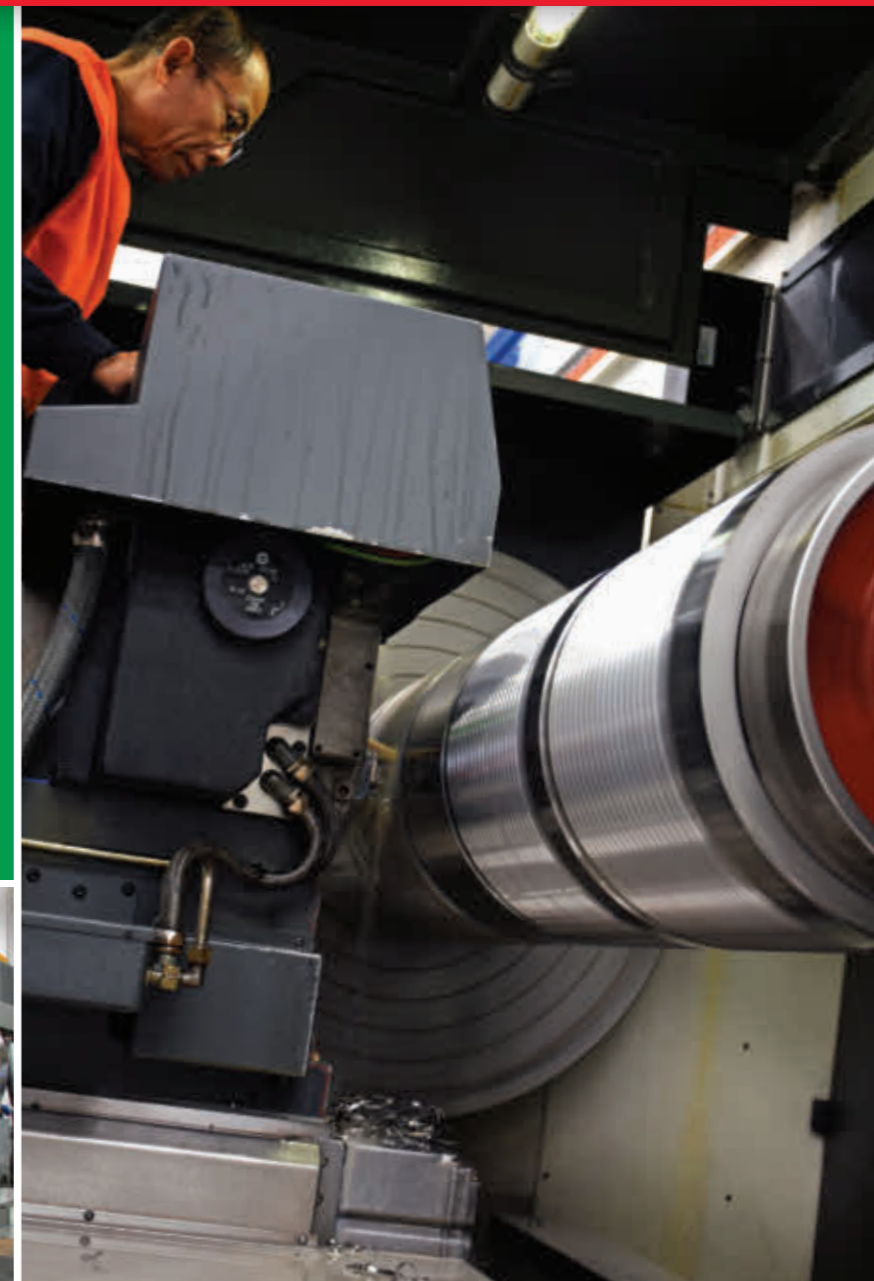
Replacement winch with like for like footprint.  
Capacity of 15 tonnes for Rio East Intercourse Island.





# Winch Fabrication and Machining

Boasting first class design, fabrication, blast and paint coupled with state of the art CNC machining capabilities all contained in-house, Eilbeck is a one stop shop enabling our winches and sheaves to be manufactured to strictest quality controls, dimensional tolerances, and delivery deadlines. All Eilbeck facilities are ISO9001 accredited and our Heavy Machining Centre carries certifications to manufacture ATEX and IECex products, which involves a high level of quality control and annual auditing to ensure the facilities tooling is well calibrated and quality systems implemented and controlled at all times.





Eilbeck Cranes - Australia  
ABN: 22 295 128 214 ACN: 008 973 662  
T.Eilbeck & Son Pty Ltd T/F The Eilbeck Unit Trust  
[www.eilbeckwinches.com](http://www.eilbeckwinches.com)



**Perth – Manufacturing**  
28 Jackson Street  
Bassendean WA 6054  
Phone: 61 (08) 9279 4800  
Email: [perth@eilbeckcranes.com](mailto:perth@eilbeckcranes.com)

**Perth – Manufacturing**  
11 Yelland Way  
Bassendean WA 6054  
Phone: 61 (08) 9379 3724  
Email: [perth@eilbeckcranes.com](mailto:perth@eilbeckcranes.com)

**Perth – Service / Testing**  
14 Yelland Way  
Bassendean WA 6054  
Phone: 61 (08) 9379 3724  
Email: [perthservice@eilbeckcranes.com](mailto:perthservice@eilbeckcranes.com)

**Tom Price – Service**  
Lot 28A Mine Road  
Tom Price WA 6751  
Phone: 61 (08) 9188 1826  
24/7: 0437 134 874  
Email: [tomprice@eilbeckcranes.com](mailto:tomprice@eilbeckcranes.com)

**Karratha – Service**  
Unit 3 / 4 Crane Circle  
Karratha WA 6714  
Phone: 61 (08) 9185 4801  
24/7: 0407 208 025  
Email: [karratha@eilbeckcranes.com](mailto:karratha@eilbeckcranes.com)

**Darwin – Service**  
Phone: 61 (07) 3376 8255  
Email: [darwin@eilbeckcranes.com](mailto:darwin@eilbeckcranes.com)

**Sydney – Manufacturing**  
6 Moorlands Road  
Ingleburn NSW 2565  
Phone: 61 (02) 9829 3700  
Email: [sydney@eilbeckcranes.com](mailto:sydney@eilbeckcranes.com)

**Sydney – Heavy Machining / Winches**  
41 Broadhurst Road  
Ingleburn NSW 2565  
Phone: 61 (02) 9618 5674  
Email: [machining@eilbeckcranes.com](mailto:machining@eilbeckcranes.com)

**Sydney – Service / Winches / Machining**  
53 Lancaster Street  
Ingleburn NSW 2565  
Phone: Service: 61 (02) 9618 1904  
Phone: Machining: 61 (02) 9618 5674  
Email: [sydneyservice@eilbeckcranes.com](mailto:sydneyservice@eilbeckcranes.com)

**Newcastle – Service**  
1/50 Sandringham Ave  
Thornton NSW 2322  
Phone: 61 (02) 4966 8022  
Email: [newcastle@eilbeckcranes.com](mailto:newcastle@eilbeckcranes.com)

**Mackay – Manufacturing / Service**  
32 Diesel Drive  
Paget QLD 4740  
Phone: 61 (07) 4998 5599  
Email: [mackay@eilbeckcranes.com](mailto:mackay@eilbeckcranes.com)

**Brisbane – Service**  
Unit 3 / 12 Sudbury Street  
Darra QLD 4076  
Phone: 61 (07) 3376 8255  
Email: [brisbane@eilbeckcranes.com](mailto:brisbane@eilbeckcranes.com)

**Townsville – Service**  
1/58 Keane Street  
Currajong QLD 4812  
Phone: 61 (07) 4998 5599  
Email: [townsville@eilbeckcranes.com](mailto:townsville@eilbeckcranes.com)

**Adelaide – Service**  
2/23 Clovelly Avenue  
Royal Park SA 5014  
Phone: 61 (08) 8162 5150  
Email: [adelaide@eilbeckcranes.com](mailto:adelaide@eilbeckcranes.com)

**Whyalla – Service**  
Phone: 61 (08) 8162 5150  
Email: [whyalla@eilbeckcranes.com](mailto:whyalla@eilbeckcranes.com)

**Melbourne – Manufacturing / Service**  
321 Doherty's Road  
Truganina VIC 3029  
Phone: 61 (03) 9369 7444  
Email: [melbourne@eilbeckcranes.com](mailto:melbourne@eilbeckcranes.com)

**New Zealand – Baker Cranes**  
10 Aerovista Place  
Wiri Auckland 2150  
Phone: 64 (9) 277 0736  
Email: [newzealand@eilbeckcranes.com](mailto:newzealand@eilbeckcranes.com)  
Web: [www.bakercranes.co.nz](http://www.bakercranes.co.nz)

**United Arab Emirates**  
Elevation General Trading  
Wave Tower Suite 704, Reem Island  
Abu Dhabi  
Phone: 971 547 775 302  
Email: [uae@eilbeckcranes.com](mailto:uae@eilbeckcranes.com)

**Vietnam – AVC**  
206 Road Lac Hong Commune  
Van Lam District  
Hung Yen Province Hanoi  
Vietnam  
Phone: 84 321 3980 410  
Email: [vietnam@eilbeckcranes.com](mailto:vietnam@eilbeckcranes.com)



ISO 9001  
AS/NZS 4801  
ISO 14001  
BUREAU VERITAS  
Certification

